



New & Notable

November 2022 • Atlanta 79

BIG NEWS ON CAMPUS

BY H.M. CAULEY

ILLUSTRATIONS BY TIM BOELAARS

When Covid-19 shut down schools two years ago, it also paused planned expansions, curriculum changes, and leadership appointments. Now, a range of new programs, buildings, and faces are popping up at schools across the metro area. **Here's a sampling of the latest school news.**



A NEW FACE AT LOVETT

Bringing twenty years of experience as a diversity advocate, coach, mentor, and principal, Tommy Welch joined the **Lovett School** in September as head of culture and community, a new position that aims to foster a culture of belonging. The Buffalo native, who most recently served as the chief equity and compliance officer for Gwinnett County Public Schools, was named the 2018 Georgia Principal of the Year by the state's Association of Secondary School Principals.



Banner Year

The Alfred and Adele Davis Academy is celebrating its 30th anniversary in 2022. The Sandy Springs school, recognized as the largest Reform Jewish day school in the country, will mark the milestone with events throughout the year, including all-school Kabbalat Shabbats with special musical guests, alumni reunions, service days, and a community-wide celebration in March 2023. In conjunction with the anniversary, the school has also debuted a program called Nurture, designed to provide resources and connections for families of young children.



Northern Exposure

It's taken almost two years, but renovations have been completed at **Springmont School's** 86-acre "landschool" in North Georgia. Improvements to the lodge, where students from the Sandy Springs campus enjoy overnight camping trips, added a commercial-grade kitchen, new restrooms, central air, and decor upgrades. Excursions to the retreat near the Appalachian Trail—part of the elementary and middle school curriculum—provide opportunities to learn about the environment while practicing independence away from home.

PASSING THE TORCH

After an eight-month search among almost 200 school leaders around the globe, the **Paideia School** announced it will welcome Thomas Taylor as its new head. Taylor will come to the Druid Hills school next year from New York's Riverdale Country School, where he served as head of the upper school. Taylor, who is a doctoral candidate in education policy and leadership at the University of Minnesota and has a master's degree from Teachers College at Columbia University, will follow in the footsteps of founding head of school Paul Bianchi, who took on the leadership role in 1971.



A HEAD START

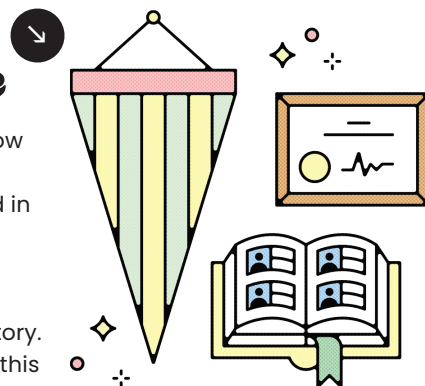
The **Walker School** in Marietta has welcomed Carl Carlson as its new head of school. Carlson's thirty-year resume includes serving as head of high school for

the Tampa Preparatory School and more than two decades teaching at New England boarding schools. Carlson, who attended Wesleyan University and earned a master's degree in education from Harvard, said the decision to lead Walker was influenced by the school's academic programs, diverse community, and the kindness he experienced during visits.

Time Capsule

The school we know as **Woodward Academy** opened in 1900 as Georgia Military Academy, and a new history center tells that story. Dedicated earlier this year, the Stephen A.

Belin '72 History Center showcases the school's evolution through permanent installations, including a timeline of notable events from 1900 to present and a reproduction of a Georgia Military Academy dorm room, alongside rotating displays of artifacts and memorabilia. The center also provides a climate-controlled home for the school archives.





A TRIO OF CHANGES

Buckhead's **Trinity School** recently marked a few milestones: It opened its Early Childhood Outdoor Learning Center, completed construction of an early elementary dining hall, and officially launched a \$14.5 million capital and endowment campaign.

The outdoor center is designed to encourage play and learning in a natural setting, with gathering areas, a "Great Tree" climbing feature, a trike path, and an amphitheater equipped with percussion instruments and oversized xylophones. The "Inspire Excellence" campaign, which began quietly in January 2021 and helped build the dining hall, has already reached \$10.3 million from early donations.



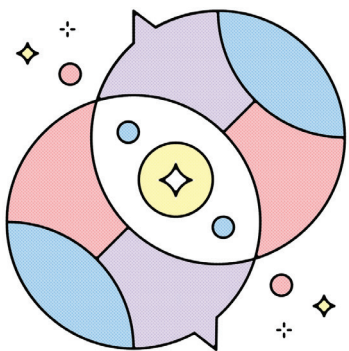
Game Changer

In June, East Cobb's **Mt. Bethel Christian Academy** broke ground on a turf football, soccer, and lacrosse field at its upper school campus. Called Arrow Field, the complex is expected to be completed this winter, bringing new spectator seating, landscaping, parking, and a state-of-the-art scoreboard. Other added amenities include a fieldhouse outfitted with locker rooms, a weight room, and upgraded training facilities. The school's football program debuted in 2021 and is expanding this year to fourth through eighth graders.

Talking It Out



TED talks are designed to share innovative and motivational ideas through storytelling, enhanced by the principles of technology, entertainment, and design. Students at **Pace Academy** have been doing just that through their own take on TED, dubbed TEDx Pace Academy, since 2019, and this year, they're moving beyond the Buckhead campus. Pace's TEDx committee is reaching out to other metro-area schools to include more voices and a broader range of student ideas.



AN ANNIVERSARY APPOINTMENT



Annunciation Day School, the educational arm of the Greek Orthodox Cathedral of the Annunciation, has welcomed a new head of school. Adam Greenwood moved to the DeKalb school after three years as headmaster for the Pointer School in London. His experience includes teaching in private and public schools in England and serving on an independent school board. He takes over the helm as the community and its 160 students mark the 20th anniversary of the school's inception.

2022

Atlanta Independent School Guide



NOTES ON LISTINGS

Atlanta magazine's 2022 directory includes schools that are members of or accredited by the Southern Association of Independent Schools (SAIS) or the Atlanta Area Association of Independent Schools (AAAIS). The schools have campuses in metro Atlanta's 12 core counties: Cherokee, Clayton, Cobb, DeKalb, Douglas, Fayette, Forsyth, Fulton, Gwinnett, Hall, Henry, and Rockdale.

EDITOR'S NOTE: Data was compiled in September 2022 from surveys sent to the schools. The "What's New" question was optional. If a school did not respond, we included a general description.

N/A = not applicable
data N/A = data not available

ACADEME OF THE OAKS

146 New Street, Decatur, 30030,
404-405-2173, academeatlanta.org

Grades offered 9–12

Total number of students 80

Accreditation AAIS, GISA, SACS, SAIS

Founded 2003

Students of color 47%

Average class size 20

Religious affiliation none

Seniors with National Merit recognition N/A

Grade foreign language first offered 9

Language(s) offered Spanish; independent language studies in connection with the school's international exchange program

Annual tuition \$21,500

Students receiving financial aid 22.5%

Uniform no

Bus transportation no

Teacher retention rate 85%

AP courses offered N/A; exam administration for juniors and seniors

Varsity sports basketball, track, Ultimate,

volleyball

Division GAPPS

STEM/STEAM program yes

Art studios 1

Theater productions per year 3

Musical ensembles 5

Annual applications per opening data N/A

What's new The school has added a drama elective, film club, blacksmithing, and a computer science block for grade 9.

THE ACADEMY OF SCHOLARS

5096 Panola Industrial Boulevard,
Decatur, 30035, 678-632-6001,
academyofscholars.com

Grades offered pre-K–6

Total number of students 358

Accreditation AAIS, GAC

Founded 2013

Students of color data N/A

Average class size 18

Religious affiliation Christian,

nondenominational

Grade foreign language first offered pre-K

Language(s) offered Spanish

Lowest tuition for 5-day students \$5,995

Annual tuition for highest grade \$7,295

Students receiving financial aid 100%

Class size expands in 2, 6

Uniform yes

Bus transportation no

Teacher retention rate 72%

Intramural sports N/A

STEM/STEAM program no

Art studios 0

Theater productions per year 2

Musical ensembles 0

Annual applications per opening 0.55

What's new The school has added an entrepreneurship program.

ACTON ACADEMY AT SERENBE

10636 Serenbe Lane, Chattahoochee Hills,
30268, 770-463-0081,
actonacademyatserenbe.com

Grades offered age 7 weeks–grade 12

Total number of students 200

Accreditation AAIS (GAC-accredited for K; in process for 1–12)

Founded 2018

Students of color 27%

Average class size 1:22 ratio

Religious affiliation none

Grade foreign language first offered N/A

Language(s) offered N/A

Lowest tuition for 5-day students \$12,500

Annual tuition for highest grade \$17,500

Students receiving financial aid 28%

Class size expands in data N/A

Uniform no

Bus transportation no

Teacher retention rate data N/A

Varsity sports cross-country, swimming, track & field

Division GAPPS

STEM/STEAM program yes

Art studios incorporated in classes

Theater productions per year 1

Musical ensembles data N/A

Annual applications per opening N/A

What's new Acton is currently building a state-of-the-art campus, with our first building opening in January 2023. The new campus will look out over the woods and nature trails, with blueberry bushes and apple trees outside our doors, steps from greenspace for outdoor classrooms and play. Our children's learning experience is broadened by participating in all the amenities that Serenbe has to offer: visiting artists through the Artist in Residence program to teach classes, local resident talent performing in our classrooms, and more.

THE ALFRED & ADELE DAVIS ACADEMY

Lower school: 8105 Roberts Drive, Atlanta, 30350, 770-671-0085; **middle school:** 7901 Roberts Drive, Atlanta, 30350, 770-804-9191; davisacademy.org

Grades offered pre-K–8

Accreditation SACS, SAIS

Total number of students 475

Founded 1992

Students of color N/A

Average class size 16 (pre-K–5 has 1 lead teacher, 1 assistant teacher per class)

Religious affiliation Jewish (Reform)

ACCREDITATION KEY

AAAIS

Atlanta Area
Association of
Independent
Schools

AMI

Association
Montessori
Internationale

AMS

American
Montessori
Society

ACSI

Association of
Christian Schools
International

BFTS

Bright From
the Start

CESA

Council on
Educational
Standards &
Accountability

GAC

Georgia
Accrediting
Commission

GAPPS

Georgia
Association of
Private &
Parochial Schools

GHSA

Georgia High
School
Association

GIAA

Georgia
Independent
Athletic
Association

GISA

Georgia
Independent
School
Association

IB/IBO

International
Baccalaureate®

NAEYC

National
Association for
the Education of
Young Children

NAIS

National
Association of
Independent
Schools

NCEA

National
Catholic
Educational
Association

SACS

Southern
Association of
Colleges and
Schools

SAIS

Southern
Association of
Independent
Schools

ATLANTA INDEPENDENT SCHOOL GUIDE

Grade foreign language first offered pre-K
Language(s) offered Hebrew, Spanish
Lowest tuition for 5-day students \$16,370
Annual tuition for highest grade \$29,370
Students receiving financial aid data N/A
Class size expands in N/A
Uniform yes
Bus transportation yes (4 centralized routes)
Teacher retention rate 97%
Intramural sports baseball, basketball, cross-country, golf, soccer, softball, tennis, track & field, Ultimate, volleyball
STEM/STEAM program yes
Art studios 3
Theater productions per year multiple, including one all-school musical
Musical ensembles 5
Annual applications per opening data N/A
What's new The Davis Academy is celebrating its 30th year. As we kick off this milestone year, we unite around our shared Davis L-O-V-E: Living Our Values Every Day, as our guide to being the best versions of ourselves. This promises to be a spectacular year filled with many exciting milestone moments—from All-School Kabbalat Shabbats with special musical guests, to alumni reunions, to a community-wide 30th anniversary celebration in March.

ANNUNCIATION DAY SCHOOL

2500 Clairmont Road, Atlanta, 30329,
 404-565-2850, adsatlanta.org
Grades offered pre-K2-8
Total number of students 165
Founded 2002
Accreditation Cognia, SACS
Students of color data N/A
Average class size 12
Religious affiliation Christian
Grade foreign language first offered pre-K2
Language(s) offered Greek, Spanish
Lowest tuition for 5-day students \$4,500 (pre-K); \$9,150 (K-5)
Annual tuition for highest grade \$11,450
Students receiving financial aid 20%
Class size expands in N/A
Uniform yes
Bus transportation no
Teacher retention rate 80%
Intramural sports basketball, cross-country, soccer, volleyball
STEM/STEAM program no
Art studios 1
Theater productions per year 1
Annual applications per opening data n/a
What's new Annunciation Day School is proudly celebrating 20 years of academic excellence and providing a Christ-centered curriculum in metro Atlanta. ADS has also welcomed a new Head of School, Mr. Adam M. Greenwood. Greenwood served as headmaster at the Pointer School in London for three years, has taught in both the private and public school sector in England, and served on an independent school board.

ARBOR MONTESSORI SCHOOL

2998 Lavista Road, Decatur, 30033; 1434 Scott Boulevard, Decatur, 30033; 404-321-9304, arbormontessori.org



Grades offered 18 months–grade 8
Total number of students 245
Accreditation AMI, SACS, SAIS
Founded 1970
Students of color data N/A
Average class size 25 (K-6; multiage classroom), 40 (7-8; multigrade classroom)
Religious affiliation none
Grade foreign language first offered pre-K
Language(s) offered Spanish
Lowest tuition for 5-day students \$11,250
Annual tuition for highest grade \$21,790
Students receiving financial aid 8%
Class size expands in N/A
Uniform no
Bus transportation no
Teacher retention rate 96%
Intramural sports basketball, cross-country, swimming, track & field, Ultimate
STEM/STEAM program yes
Art studios 1 (plus kiln)
Theater productions per year 3
Annual applications per opening N/A
What's new Arbor is pleased to welcome our new Head of School, Heather Maccabe.

ATLANTA ACADEMY

2000 Holcomb Woods Parkway, Roswell,
 30076, 678-461-6102, atlantaacademy.com
Grades offered pre-K-8; bridge program available
Total number of students 375
Founded 2000
Accreditation AAAS, BFTS, SAIS
Students of color 36%
Average class size 16
Religious affiliation nondenominational
Grade foreign language first offered preschool
Language(s) offered Spanish
Lowest tuition for 5-day students \$11,700
Annual tuition for highest grade \$18,210
Students receiving financial aid data N/A
Class size expands in middle school
Uniform yes

Bus transportation no
Teacher retention rate data N/A
Intramural sports basketball, cross-country, golf, soccer, tennis, touch football, Ultimate, volleyball
STEM/STEAM program yes
Art studios 2
Theater productions per year 1
Musical ensembles several throughout the year
Annual applications per opening data N/A
What's new Atlanta Academy Middle School students participate each year in the Georgia Council on Economic Education Stock Market Game. This year, two seventh-grade and two eighth-grade students took 1st place in our Congressional District.

ATLANTA GIRLS' SCHOOL

3254 Northside Parkway, Atlanta, 30327,
 404-845-0900, atlantagirlsschool.org
Grades offered 6-12
Total number of students 118
Number of high school students 118
Accreditation SAIS
Founded 2000
Students of color 65%
Average class size 13
Religious affiliation none
Seniors with National Merit recognition data N/A
Grade foreign language first offered 7
Language(s) offered French, Spanish
Annual tuition \$29,850
Students receiving financial aid 41%
Class size expands in 6, 7, 9
Uniform yes
Bus transportation no
Teacher retention rate data N/A
AP courses offered 12
Students scoring 3+ on AP exams data N/A
Varsity sports basketball, cross-country, soccer, swimming, tennis, track & field, volleyball
Division GISA class 1-AAA



ARBOR

MONTESSORI SCHOOL

At Arbor Montessori School we foster independence in each child through supportive relationships, joyful learning, and meaningful work in a Montessori environment, inspiring them to contribute with integrity to the community of the world.

Call 404-321-9304 today to set up your personal, on-campus tour.

Now enrolling students from 18 months old to 8th grade at our two Decatur campus locations for the 2023-2024 school year.

2998 Lavista Road, Decatur GA 30033

1434 Scott Boulevard, Decatur GA 30030

404-321-9304 • www.arbormontessori.org



Fostering *Lifelong* Learning

WHERE GIRLS TAKE THE LEAD.



accepting applications for grades 6–12

atlantagirlsschool.org/admissions

3254 Northside Parkway NW, Atlanta, Georgia 30327



ATLANTA INDEPENDENT SCHOOL GUIDE

STEM/STEAM program yes**Art studios** 3**Theater productions per year** 3**Musical ensembles** 2**Annual applications per opening** data N/A

What's new AGS welcomed a Dean of Signature Programs this year to expand and enhance the Leadership Labs, Winterim, global travel, internship, and advisory programs. The school has expanded its learning support staff as well as its performing arts offerings, with the addition of dance as a middle school course.

ATLANTA INTERNATIONAL SCHOOL

2890 North Fulton Drive, Atlanta, 30305,
404-841-3840, aischool.org

All students at AIS are IB students.

Grades offered pre-K-12**Total number of students** 1,325**Number of high school students** 389

Accreditation Cognia, Council of International Schools (CIS), IB Continuum World School, IBO, SAIS

Founded 1984 (opened 1985)**Students of color** 61%**Average class size** 17**Religious affiliation** none**Seniors with National Merit recognition** 6**Grade foreign language first offered** pre-K

Language(s) offered Chinese, French, German, Spanish; mother tongue support in 10

additional languages

Lowest tuition for 5-day students \$26,725**Annual tuition for highest grade** \$30,510**Students receiving financial aid** 13%**Class size expands in** 6**Uniform** no**Bus transportation** no**Teacher retention rate** 80%**AP courses offered** N/A (IB program)

Varsity sports basketball, cross-country, Esports, golf, soccer, swimming, tennis, track & field, Ultimate, volleyball

Division GHSA region 5-A private (high school); Metro Atlanta Athletic Conference Division I (middle school)

STEM/STEAM program yes**Art studios** 6**Theater productions per year** 1 scheduled, others TBD**Musical ensembles** 10**Annual applications per opening** 2.4

What's new The newly awarded Innovation grant from the Goizueta Foundation will enable initiatives across the school, such as the new film and media facilities opened this semester. A range of academic and co-curricular media courses are now being rolled out, taking full advantage of our community connections to Georgia's thriving film and TV industry. As the set for over 10 blockbuster movies, including *The Blind Side* (2006), Atlanta International School is ideally placed to offer these courses.

ATLANTA JEWISH ACADEMY

5200 Northland Drive, Atlanta, 30342,
404-843-9900, atljewishacademy.org

Grades offered infant-grade 12**Total number of students** 488**Number of high school students** 81**Founded** 2014**Accreditation** SAIS**Students of color** data N/A**Average class size** 15 (K-5), 16 (middle), 12 (high)

Religious affiliation Modern Orthodox
Seniors with National Merit recognition data N/A

Grade foreign language first offered age 2**Language(s) offered** Hebrew, Spanish**Lowest tuition for 5-day students** \$17,665**Annual tuition for highest grade** \$27,565**Students receiving financial aid** 52%**Class size expands in** N/A**Uniform** yes (K-middle); dress code (high)**Bus transportation** yes**Teacher retention rate** 82%**AP courses offered** 10**Students scoring 3+ on AP exams** 80%

Varsity sports baseball, basketball, cross-country, flag football, soccer, tennis, volleyball, wrestling

Division GHSA**STEM/STEAM program** yes**Art studios** 2**Theater productions per year** 4**Musical ensembles** 3

**DEVELOPING
COURAGEOUS
LEADERS**

aischool.org

@aischool

Annual applications per opening data N/A

ATLANTA MONTESSORI INTERNATIONAL SCHOOL

1970 Cliff Valley Way, Atlanta, 30329,
404-325-6777; 1215 Ponce de Leon Avenue,
Atlanta, 30306, 404-500-0501; amischool.com

Grades offered ages 8 weeks–grade 4 (Cliff Valley); infant–K (Ponce de Leon)

Total number of students 250

Accreditation AAAS, AMI, Cognia, GAC, SAIS

Founded 2004

Students of color N/A

Average class size 9 (infant), 14 (toddler), 30 (primary and elementary)

Religious affiliation nondenominational

Grade foreign language first offered infant

Language(s) offered Spanish

Lowest tuition for 5-day students \$16,430

Annual tuition for highest grade \$22,656

Students receiving financial aid N/A

Uniform no

Bus transportation yes (to Endeavor International School, which houses junior high program)

Teacher retention rate 87%

Intramural sports N/A

STEM/STEAM program yes

Art studios 1

Theater productions per year N/A

Musical ensembles 2

Annual applications per opening rolling admissions

ATLANTA SPEECH SCHOOL

3160 Northside Parkway, Atlanta, 30327,
404-233-5332, atlantaspeechschool.org

The school includes the Katherine Hamm Center (for preschool-aged children who are deaf and hard of hearing), Kenan Preschool (for typical learners), Stepping Stones (for preschool-aged children experiencing speech and language delays), and the Wardlaw School (for K–6 who have been diagnosed with dyslexia).

Grades offered pre-K2–6

Total number of students 442 (includes students in auditory-verbal therapy in the Hamm Center)

Accreditation AAAS, BFTS, GISA, NAEYC, SACS, SAIS

Founded 1938

Students of color 20%

Average class size 10

Religious affiliation none

Lowest tuition for 5-day students \$16,052

Annual tuition for highest grade \$39,890

Students receiving financial aid 15%

Class size expands in N/A

Uniform no

Bus transportation no

Teacher retention rate 84%

Intramural sports N/A

STEM/STEAM program yes

Art studios 1

Theater productions per year 2+

Musical ensembles 2

Annual applications per opening data N/A

What's new Dr. Ryan Lee-James has been promoted to Chief Academic Officer, in addition to continuing her leadership role for the Rollins Center and its Cox Campus. Dr. Lee-James serves as the academic expert across all of the Atlanta Speech School, its programs, and its partnerships. In the Anne & Jim Kenan Preschool, we welcome our new director, Brooke Hight. Brooke is serving in this capacity as Kenan celebrates its 50th year.

ATLANTA YOUTH ACADEMY

2120 Forrest Park Road, Atlanta, 30315,
404-370-1960, atlantayouthacademy.com

Grades offered pre-K–8

Total number of students 150

Accreditation Council for Advancement and Support of Education, GAC, GISA, SAIS

Founded 1997

Students of color 100%

Average class size 15

Religious affiliation Christian

Grade foreign language first offered pre-K

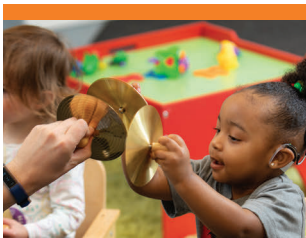
Language(s) offered Spanish

Lowest tuition for 5-day students \$100/month

Annual tuition for highest grade 8% of gross household income, not to exceed \$16,700

Students receiving financial aid 100%

Where each child finds their voice...



Katherine Hamm Center is for children who are deaf or hard of hearing, and develops language and pre-literacy through written and spoken language in family-centered programs for children from birth through pre-K.



Anne and Jim Kenan Preschool is for preschoolers who are ready to form a pre-literacy foundation. Kenan teachers prepare children for all subjects in a setting that is at once engaging and rigorous.



Stepping Stones is for preschool aged children who have early speech and language delays. Stepping Stones focuses on ensuring each child has access to literacy and the chance to experience their full potential.



Wardlaw School serves K-6 elementary aged children with dyslexia through individualized, science-informed language and literacy instruction. Wardlaw students advance to excel in other accelerated schools.

...so they are free to become who they are meant to be.



Schedule your visit: atlantaspeechschool.org/admissions

ATLANTA INDEPENDENT SCHOOL GUIDE

Class size expands in 4 (beginning 2023)
Uniform yes
Bus transportation no
Teacher retention rate 90%
Intramural sports basketball, cheerleading, soccer, softball
STEM/STEAM program yes
Art studios 1
Theater productions per year 1
Musical ensembles 2
Annual applications per opening 2–3
What's new AYA opened new academic facilities in August 2020; we have a dedicated science teacher and maker space. We now offer hot breakfast and lunch daily free of charge, and we began a choir program in August 2022.

THE BEDFORD SCHOOL

5665 Milam Road, Fairburn, 30213,
 770-774-8001, thebedfordschool.org
Grades offered 1–9
Total number of students 148
Number of high school students 5
Accreditation GAC, SAIS
Founded 1985
Students of color 39%
Average class size 7 (1–5), 9 (middle), 8 (high)
Religious affiliation none
Grade foreign language first offered N/A
Annual tuition \$21,050
Students receiving financial aid 80% (Bedford

Scholarship or SB-10 funding)
Class size expands in 6
Uniform yes
Bus transportation no
Teacher retention rate 89%
AP courses offered N/A
Varsity sports basketball (middle school), soccer, track & field, volleyball (girls)
Division Private Athletic Conference
STEM/STEAM program yes
Theater productions per year 1
Annual applications per opening 82% acceptance rate
What's new The school has added music to the arts program for all grades, along with a middle school chorus.

BEN FRANKLIN ACADEMY

1585 Clifton Road, Atlanta, 30329,
 404-633-7404, benfranklinacademy.org
Grades offered 9–12
Total number of students 125
Accreditation Cognia, SAIS
Founded 1987
Students of color 10%
Average class size individualized instruction; 4:1 student–teacher ratio
Religious affiliation none
Seniors with National Merit recognition data N/A
Grade foreign language first offered 9
Language(s) offered American Sign

Language, French, German, Latin, Russian, Spanish
Annual tuition \$28,050–\$35,500
Students receiving financial aid 18%
Class size expands in N/A
Uniform no
Bus transportation no
Teacher retention rate 96%
AP courses offered 24
Students scoring 3+ on AP exams data N/A
Varsity sports cross-country, golf, Ultimate
Division GHSA class AAAAA
STEM/STEAM program yes
Art studios 1
Theater productions per year 2–3
Musical ensembles 2
Annual applications per opening 4
What's new Ben Franklin Academy is celebrating its 35th anniversary, with celebrations throughout the school year. Robotics Club has been added.

BLESSED TRINITY CATHOLIC HIGH SCHOOL

11320 Woodstock Road, Roswell, 30075,
 678-277-9083, btcatholic.org
Grades offered 9–12
Total number of students 960
Accreditation AAAS, Cognia
Founded 2000
Students of color 10%
Average class size 19

Galloway students confidently embrace challenges while developing the knowledge, skills, and cultural competence to thrive as enlightened contributors in their chosen pathways.



the
galloway
school

PRE-K3 - GRADE 12

Schedule your family's tour at gallowayschool.org/visit!

Religious affiliation Catholic
Seniors with National Merit recognition 5
Language(s) offered French, Latin, Spanish
Annual tuition \$16,700 (\$14,600 for active Catholic students)
Students receiving financial aid 19%
Class size expands in 9
Uniform yes
Bus transportation yes, from specific areas
Teacher retention rate 92%
AP courses offered 27
Students scoring 3+ on AP exams 78%
Varsity sports baseball, basketball, cheer-leading, cross-country, flag football, football, golf, lacrosse, soccer, softball, swimming/diving, tennis, track & field, volleyball, wrestling
Division GHSA class AAAAAA
STEM/STEAM program yes
Art studios 2
Theater productions per year 4
Musical ensembles 5
Annual applications per opening 1.5

BRANDON HALL SCHOOL

1701 Brandon Hall Drive, Atlanta, 30350,
 770-394-8177, brandonhall.org
Grades offered 6-12
Total number of students 102
Number of high school students 83
Accreditation NAIS, SAIS, Small Boarding Schools Association, The Association of Boarding Schools

Founded 1959
Students of color 30%
Average class size 8
Religious affiliation none
Seniors with National Merit recognition N/A
Grade foreign language first offered 6
Language(s) offered Chinese (online), ESL, French (online), German (online), Introduction to Languages, Spanish
Annual tuition \$29,200-\$59,150
Students receiving financial aid 15%
Class size expands in N/A
Uniform yes
Bus transportation no
Teacher retention rate 80%
AP courses offered 11
Students scoring 3+ on AP exams 75%
Varsity sports basketball, cross-country, flag football, golf, soccer, tennis, track & field, volleyball
Division GISA class AA
STEM/STEAM program yes
Art studios 3
Theater productions per year 3
Musical ensembles 1
Annual applications per opening rolling admissions

THE CHILDREN'S SCHOOL

345 10th Street, Atlanta, 30309,
 404-873-6985, tcsatl.org
Grades offered preschool-grade 8

Total number of students 365
Accreditation AAAS, NAIS, SAIS
Founded 1970
Students of color 53%
Average class size 16
Religious affiliation nonsectarian
Grade foreign language first offered preschool
Language(s) offered Mandarin, Spanish
Annual tuition \$15,057-\$24,512
Students receiving financial aid data N/A
Class size expands in pre-K, K, 6
Uniform no
Bus transportation no
Teacher retention rate data N/A
Intramural sports cross-country, flag football, tennis, track & field, volleyball
STEM/STEAM program yes
Art studios yes
Theater productions per year 1
Musical ensembles 2
Annual applications per opening data N/A
What's new In 2021, we received a major grant from the Grass Family Foundation to expand our Learning Strategies and Academic Support Services program to provide learning support to more students.

CHRIST THE KING SCHOOL

46 Peachtree Way, Atlanta, 30305,
 404-233-0383, christking.org
Grades offered K-8

GREATER EDUCATION IS WITHIN REACH

We're only a short drive away!
GAC buses (WiFi and A/C) have stops in **Buckhead & Brookhaven**.

Infant-12th Grade
GAC.org
 770-243-2273



GREATER ATLANTA
CHRISTIAN SCHOOL



REGISTER FOR
OPEN HOUSE

ATLANTA INDEPENDENT SCHOOL GUIDE

Total number of students 563
Accreditation AAIS, Cognia
Founded 1937
Students of color 16%
Average class size 22
Religious affiliation Catholic
Grade foreign language first offered K
Language(s) offered Spanish
Lowest tuition for 5-day students \$10,094 (Catholic); \$13,081 (non-Catholic)
Annual tuition for highest grade \$10,694 (Catholic); \$13,681 (non-Catholic)
Students receiving financial aid 9%
Class size expands in N/A
Uniform yes
Bus transportation no
Teacher retention rate 93%
Intramural sports basketball, soccer, volleyball
STEM/STEAM program yes
Art studios 1
Theater productions per year 2
Annual applications per opening data N/A

CLIFF VALLEY SCHOOL

2426 Clairmont Road, Atlanta, 30329,
 678-302-1302, cliffvalley.org
Grades offered 3s, pre-K–8
Total number of students 431
Accreditation SAIS
Founded 1966
Students of color data N/A
Average class size 20
Religious affiliation none
Grade foreign language first offered pre-K
Language(s) offered Spanish (all grades); French, German, Italian, Japanese, Korean, Mandarin, Russian (grades 6–8)
Lowest tuition for 5-day students \$10,712
Annual tuition for highest grade \$19,360
Students receiving financial aid data N/A
Class size expands in N/A
Uniform no
Bus transportation no
Teacher retention rate 95%
Intramural sports basketball, cross-country, passing league football, soccer, Ultimate, volleyball
STEM/STEAM program yes
Art studios 1
Theater productions per year 1
Musical ensembles 3
Annual applications per opening data N/A

COMMUNITY CHRISTIAN SCHOOL

2001 Jodeco Road, Stockbridge, 30281,
 678-432-0191, communitychristianschool.net
Grades offered 6 weeks–grade 12
Total number of students 630
Number of high school students 111
Accreditation SACS, SAIS
Founded 1997
Students of color 68%
Average class size 14 (K5–2), 16–18 (3–5), 15 (middle)
Religious affiliation Christian nondenominational
Seniors with National Merit recognition 1
Grade foreign language first offered K2
Language(s) offered American Sign

Language, Latin, Mandarin, Spanish
Lowest tuition for 5-day students \$8,930
Annual tuition for highest grade \$12,888
Students receiving financial aid 14%
Class size expands in N/A
Uniform yes
Bus transportation no
Teacher retention rate data N/A
AP courses offered 10
Students scoring 3+ on AP exams 81%
Varsity sports baseball, basketball, cheerleading, cross-country, football, soccer, swimming, track & field, volleyball
Division GAPPS
STEM/STEAM program yes
Art studios 2
Theater productions per year 1
Musical ensembles 10
Annual applications per opening 90% acceptance rate

CORNERSTONE CHRISTIAN ACADEMY

5295 Triangle Parkway, Peachtree Corners,
 30092, 770-441-9222, cornerstonecougars.org
Grades offered K–8
Total number of students 460+
Accreditation SAIS
Founded 2001
Students of color 17%
Average class size 17 (lower), 18 (middle)
Religious affiliation Christian
Grade foreign language first offered K
Language(s) offered Spanish
Lowest tuition for 5-day students \$12,967
Annual tuition for highest grade \$16,872
Students receiving financial aid 17%
Class size expands in 5
Uniform yes
Bus transportation yes (morning)
Teacher retention rate 92%
Interscholastic sports archery, baseball, basketball, bowling, cheerleading, cross-country, disc golf, dodgeball, flag football, golf, soccer, swimming, tennis, track & field, volleyball
STEM/STEAM program yes
Art studios 1
Theater productions per year 12
Musical ensembles 3
Annual applications per opening data N/A
What's new The school was named best overall North Atlanta Metro League athletic program for ten consecutive years (2012–2022). It is affiliated with METRO, an independent association with 13 metro-Atlanta private schools, and it ranked within the top five small company workplaces for the past two years.

THE COTTAGE SCHOOL

700 Grimes Bridge Road, Roswell, 30075,
 770-641-8688, cottageschool.org
Grades offered 3–12
Total number of students 262
Number of high school students 140
Accreditation AAIS, Cognia, GISA, SACS, SAIS
Founded 1985
Students of color 23%
Average class size 8–10
Religious affiliation none
Seniors with National Merit recognition N/A

Grade foreign language first offered 9
Language(s) offered French, Spanish
Lowest tuition for 5-day students \$24,500
Annual tuition for highest grade \$29,500
Students receiving financial aid 12%
Class size expands in N/A
Uniform no (dress code)
Bus transportation yes
Teacher retention rate 92%
AP courses offered N/A (honors level only)
Varsity sports archery, baseball, basketball, bowling, cheerleading, cross-country, Esports, golf, soccer, swimming, tennis, track & field, volleyball
Division GISA class AA
Art studios 2
Theater productions per year 4
Annual applications per opening data N/A
What's new The school welcomed the addition of the 3rd grade level, an expanded culinary arts program, and expanded Esports programs.

CRISTO REY ATLANTA JESUIT HIGH SCHOOL

222 Piedmont Avenue, Atlanta, 30308,
 404-637-2800, cristoreyatatlanta.org
 The school provides a private, college-prep education along with a corporate work-study program to students from underserved communities.
Grades offered 9–12
Total number of students 484
Accreditation SAIS
Founded 2014
Students of color 99%
Average class size 17
Religious affiliation Roman Catholic
Seniors with National Merit recognition N/A
Grade foreign language first offered 10
Language(s) offered Spanish
Annual tuition for highest grade \$350–\$2,500 (based on income)
Students receiving financial aid 100%
Class size expands in N/A
Uniform yes
Bus transportation no
Teacher retention rate 89%
AP courses offered 8
Students scoring 3+ on AP exams data N/A
Varsity sports baseball, basketball, cheerleading, cross-country, golf, soccer, tae kwon do, volleyball
Division GIAA
STEM/STEAM program no
Annual applications per opening 3
What's new The school is celebrating the opening of the Cristo Rey St. Ignatius Commons, designed by students for students. Student interns for one of our corporate work partners were integrally involved in designing the space using CAD and other resources. The renovated media center will be a place for students to engage, collaborate, and study.

CUMBERLAND ACADEMY OF GEORGIA

650-A Mount Vernon Highway,
 Atlanta, 30328, 404-835-9000,
cumberlandacademy.org
Grades offered 4–12; postgraduate
Total number of students 106



Holy Innocents' Episcopal School - PK3-12 - hies.org

THE HOWARD SCHOOL

is an extraordinary school for children with language-based learning differences filled with a robust academic curriculum, athletics, arts, and community leadership opportunities.

For more information about The Howard School or to sign up for an upcoming tour, please visit howardschool.org.



LIMITED SPACE AVAILABLE



THE
HOWARD
SCHOOL

A different approach MAKES ALL THE DIFFERENCE



K-12th Grade



Personalized
Instruction



Interdisciplinary
Team of Specialists



State-of-the-Art
Assistive Technology



Small Class Sizes



Located on
Atlanta's Vibrant
Westside

1192 Foster Street, N.W. • Atlanta, Georgia 30318 • 404.377.7436

INDEPENDENT SCHOOL GUIDE

Number of high school students 53
Accreditation AAIS, Cognia, GAC
Founded 2007
Students of color 38%
Average class size 8
Religious affiliation none
Seniors with National Merit recognition data N/A
Grade foreign language first offered 9
Language(s) offered multiple
Annual tuition for grade 12 \$26,800
Students receiving financial aid varies
Class size expands in N/A
Uniform yes
Bus transportation yes (to and from MARTA)
Teacher retention rate data N/A
AP courses offered varies
Students scoring 3+ on AP exams data N/A
Varsity sports basketball, bowling, cross-country, Esports, flag football, soccer, track & field, volleyball
Division Atlanta Athletic Conference, Atlanta Private Athletic Conference
Art studios 1
Theater programs per year N/A; drama classes available
Annual applications per opening data N/A

EATON ACADEMY

1000 Old Roswell Lake Parkway, Roswell, 30076, 770-645-2673, eatonacademy.org
Grades offered K-12
Total number of students 110
Number of high school students 35
Accreditation AAIS, Cognia, GAC
Founded 1995
Students of color 10%
Average class size 5
Religious affiliation none
Seniors with National Merit recognition 10%
Grade foreign language first offered 8
Language(s) offered American Sign Language, French, German, Latin, Spanish
Lowest tuition for 5-day students \$12,900
Annual tuition for highest grade \$25,000
Students receiving financial aid 15%
Class size expands in N/A
Uniform no (dress code)
Bus transportation no
Teacher retention rate 90%
Varsity sports N/A
AP courses offered N/A
STEM/STEAM program yes
Art studios 1
Musical ensembles N/A (private lessons)
Annual applications per opening rolling admissions
What's new In addition to excellent programming for K-12 students, Eaton also offers several post-graduate programs that focus on independent living and life skills: LEAP, LIFE, College Exploratory, and Supported Employment.

THE EPSTEIN SCHOOL

335 Colewood Way, Sandy Springs, 30328, 404-250-5600, epsteinatlanta.org
Grades offered infant-grade 8
Total number of students 470
Accreditation Cognia, SAIS
Founded 1973



THE FRIENDS SCHOOL

Students of color 2%
Average class size 10-20
Religious affiliation Jewish
Grade foreign language first offered infants
Language(s) offered Hebrew, Spanish
Lowest tuition for 5-day students \$13,700
Annual tuition for highest grade \$28,675
Students receiving financial aid N/A
Class size expands in K, 6, 7, 8
Uniform yes (K-8)
Bus transportation yes (three routes: Dunwoody, Brookhaven, Intown)
Teacher retention rate data N/A
Intramural sports baseball, basketball, golf, soccer, softball, tennis, track & field, Ultimate, volleyball
STEM/STEAM program yes
Art studios 2
Theater productions per year 1
Musical ensembles 2
Annual applications per opening rolling admissions
What's new The Epstein School has recently renovated its Early Childhood and Elementary School classrooms, which included an expansion of the Innovation Space. This creative studio allows students to concept, design, and create STEM projects in class or as passion projects before school.

FELLOWSHIP CHRISTIAN SCHOOL

10965 Woodstock Road, Roswell, 30075, 770-993-1650, fellowshipchristianschool.org
Grades offered pre-K-12
Total number of students 1,041
Number of high school students 429
Accreditation CESA, Cognia, SAIS
Founded 1986
Average class size 18-22
Religious affiliation Christian
Seniors with National Merit recognition 2
Grade foreign language first offered K
Language(s) offered American Sign Language, French, German, Latin, Spanish (online and on-site)
Lowest tuition for 5-day students \$4,634 (half-day pre-K); \$8,681 (full-day pre-K)
Annual tuition for highest grade \$20,522
Uniform no (dress code)
Bus transportation yes
Varsity sports baseball, basketball,

cheerleading, cross-country, fencing, fishing, football, golf, lacrosse, soccer, softball, tennis, track & field, TREAD outdoor adventure, volleyball, wrestling
Division GHSA
STEM/STEAM program yes
Art studios 2
Theater productions per year 5
Musical ensembles 3
Annual applications per opening rolling enrollment

THE FRIENDS SCHOOL OF ATLANTA

862 Columbia Drive, Decatur, 30030, 404-373-8746, friendsschoolatlanta.org
Grades offered pre-K-3-8
Total number of students 189
Accreditation SACS, SAIS
Founded 1991
Students of color 43%
Average class size 8:1 student-teacher ratio
Religious affiliation Quaker
Grade foreign language first offered pre-K-4
Language(s) offered Latin, Spanish
Lowest tuition for 5-day students \$16,502
Annual tuition for highest grade \$26,140
Students receiving financial aid 37%
Class size expands in N/A
Uniform no
Bus transportation no
Teacher retention rate 90%
Intramural sports basketball, track & field, Ultimate, volleyball
Art studios 1
Theater productions per year 2-4
Musical ensembles N/A
Annual applications per opening rolling admissions
What's new FSA welcomed its first Director of Diversity, Equity and Inclusion in August. Their focus will include developing, implementing, and monitoring programs that align with the school's mission and promote diversity, equity, and inclusion.

THE GALLOWAY SCHOOL

215 Chastain Park Avenue, Atlanta, 30342, 404-252-8389, gallowayschool.org
Grades offered pre-K-12

Total number of students 750
Number of high school students 320
Accreditation AAAS, GISA, NAIS, SACS, SAIS
Founded 1969
Students of color 32%
Average class size 14 (pre-K-4), 15 (middle), 12 (high)
Religious affiliation none
Seniors with National Merit recognition 8%
Grade foreign language first offered pre-K-3
Language(s) offered French, Latin, Spanish; additional offerings through school partnership with Global Online Academy
Lowest tuition for 5-day students \$18,200
Annual tuition for highest grade \$31,150
Students receiving financial aid 16%
Class size expands in pre-K-3, pre-K-4, K, 5, 6, 9
Uniform no
Bus transportation no
Teacher retention rate 91%
AP courses offered 16
Students scoring 3+ on AP exams 91%
Varsity sports baseball, basketball, cross-country, golf, soccer, softball, swimming/diving, tennis, track & field, volleyball
Division GHSA region 5-A
STEM/STEAM program yes
Art studios 11 (classrooms, a photography studio, a pottery studio, and an art gallery)
Theater productions per year 3
Musical ensembles 18
Annual applications per opening 5

THE GARDEN SCHOOL

4010 Canton Road, Marietta, 30066,
 770-765-2036, thegardenmarietta.org
 Situated on 13.5 acres, the Waldorf-inspired Garden School is Georgia's first accredited Forest School with outdoor classrooms and spaces for each grade, plus a garden, pond, and creek.
Grades offered age 2–grade 5
Total number of students 100
Accreditation AAAS, GAC
Founded 2015
Students of color 35%
Average class size 12
Religious affiliation none
Grade foreign language first offered 1
Language(s) offered Mandarin, Spanish
Annual tuition \$11,625
Students receiving financial aid 32%
Class size expands in N/A
Uniform no
Bus transportation no
Teacher retention rate data N/A
Intramural sports N/A
Theater productions per year 1
Musical ensembles 1
Annual applications per opening data N/A
What's new The Garden School is expanding to include a middle school beginning with a 6th grade, which will start in the 2023–2024 school year. We are committed to becoming a school that offers a robust middle school program with all the benefits of a Waldorf-in-

spired curriculum in an outdoor setting.

GRACEPOINT SCHOOL

570 Piedmont Road, Marietta, 30066,
 678-709-6634, gracepointschool.org
Grades offered 1–8
Total number of students 130
Accreditation AAAS, Cognia, SAIS
Founded 2012
Students of color 6%
Average class size 5–8, depending on subject
Religious affiliation Christian
Language(s) offered N/A
Annual tuition \$25,000
Students receiving financial aid 20%
Class size expands in N/A
Uniform yes
Bus transportation no
Teacher retention rate data N/A
Intramural sports N/A
STEM/STEAM program yes
Art studios 1
Musical ensembles 1
Annual applications per opening data N/A
What's new To meet the needs of dyslexic learners in our community, Gracepoint will move to a larger facility for the 2023–2024 school year, located at 1407 Cobb Parkway.

GREATER ATLANTA CHRISTIAN SCHOOL

1575 Indian Trail Road, Norcross, 30093,

WHERE
 meaningful relationships
 AND engaging opportunities
 PREPARE STUDENTS FOR A
 lifetime of possibilities.

COME THRIVE WITH US!

- Pre K3-12th grade
- Small class sizes
- College-prep academics including AP courses and dual enrollment
- Award-winning extracurricular programs
- Fine arts for all ages
- Family atmosphere



We invite you to
 learn more or schedule
 a private tour.

lakeviewacademy.com
 770-531-2602

LAKEVIEW
 ACADEMY

Gainesville, GA | 4 minutes off I-985

ATLANTA INDEPENDENT SCHOOL GUIDE

770-243-2000, gac.org**Grades offered** pre-K–12**Total number of students** 1,807**Number of high school students** 617**Accreditation** AAAS, Cognia, CESA, GISA, NAIS, National Christian School Association, SACS, SAIS**Founded** 1961**Students of color** 50%**Average class size** 15 (K–5), 16 (middle and high)**Religious affiliation** Christian**Seniors with National Merit recognition** 5%**Grade foreign language first offered** K3**Language(s) offered** American Sign Language, French, Greek, Hebrew, Latin, Mandarin, Spanish**Lowest tuition for 5-day students** \$17,300**Annual tuition for highest grade** \$26,820**Students receiving financial aid** 32%**Class size expands in** K3, K5, 6, 9**Uniform** yes**Bus transportation** yes**Teacher retention rate** data N/A**AP courses offered** 29**Students scoring 3+ on AP exams** 90%**Varsity sports** baseball, basketball, cheer-leading, cross-country, Esports, football, golf, lacrosse, soccer, softball, swimming, tennis, track & field, volleyball, wrestling**Division** GHSA class AAAAA**STEM/STEAM program** yes**Art studios** 7**Theater productions per year** 18**Musical ensembles** 15**Annual applications per opening** data N/A**What's new** Continuing to incorporate innovation that supports learning, GAC completed a technology refresh, providing new M1 MacBook Airs or iPad Airs paired with an Apple Pencil to students in Grades K4–12. GAC remains committed to instilling Christian principles throughout academic and co-curricular programs with the addition of a director of spiritual life to bring greater intentionality to events and programs for students, parents, and families.**HARBOUR OAKS MONTESSORI SCHOOL**

1741 Athens Highway, Grayson, 30017,

770-979-8900, harbouroaks.org**Grades offered** toddler–high school**Total number of students** 140**Accreditation** SAIS**Founded** 1996**Students of color** data N/A**Average class size** 10–24**Religious affiliation** none**Grade foreign language first offered** K**Language(s) offered** N/A**Lowest tuition for 5-day students** \$9,925**Annual tuition for highest grade** \$13,000**Students receiving financial aid** 7%**Class size expands in** N/A**Uniform** no**Bus transportation** no**Teacher retention rate** data N/A**STEM/STEAM program** no**Art studios** 1**Theater productions per year** 0**Musical ensembles** 0**Annual applications per opening** N/A**HERITAGE PREPARATORY SCHOOL***Lower school: 1700 Piedmont Avenue,**Atlanta, 30324; upper school: 1824**Piedmont Avenue, Atlanta, 30324;**404-815-7711, heritageprep.org***Grades offered** pre-K–10 (launched grade 9 in fall 2021 and will add a grade each year)**Total number of students** 256**Accreditation** SACS, SAIS**Founded** 1998**Students of color** 13.3%**Average class size** 12 (K–5), 18 (middle)**Religious affiliation** nondenominational**Grade foreign language first offered** 3**Language(s) offered** Latin**Lowest tuition for 5-day students** \$15,660 (pre-K); \$8,900 (K)**Annual tuition for highest grade** \$17,200**Students receiving financial aid** 13%**Class size expands in** middle school**Uniform** yes**Bus transportation** no**Intramural sports** baseball, basketball, cross-country, golf, soccer, tennis, track, volleyball

EDUCATING THE WHOLE CHILD

Our students find joy and purpose in learning by doing. Through immersive and integrated experiences, students develop the character and intellect to thrive in learning and life.

Learn how at lovett.org

LIVE IT. LEARN IT.

Lovett

Teacher retention rate 95%
STEM/STEAM program no
Art studios 1
Theater productions per year 2
Musical ensembles 2
Annual applications per opening data N/A

THE HERITAGE SCHOOL

2093 Highway 29, Newnan, 30263,
 770-253-9898, heritageschool.com
Grades offered age 3–grade 12
Total number of students 461
Number of high school students 169
Accreditation NAIS, SAIS
Founded 1970
Students of color 34%
Average class size 14 (grades 1–5 and middle),
 18 (high)
Religious affiliation none
Grade foreign language first offered K
Language(s) offered French, Latin, Spanish
Annual tuition \$5,725–\$20,277
Students receiving financial aid 35%
Class size expands in 6
Uniform yes (through grade 8); dress code in
 high school
Bus transportation yes (limited)
Teacher retention rate 86%
AP courses offered 20
Students scoring 3+ on AP exams 70%
Varsity sports baseball, basketball, bass
 fishing, cheerleading, clay sports, cross-coun-

try, Esports, golf, football, soccer, softball,
 swimming, tennis, track & field, volleyball
Division GIAA 3A
STEM/STEAM program yes
Art studios 2
Theater productions per year 2
Musical ensembles 2
Annual applications per opening varies by
 grade

HIGH MEADOWS SCHOOL

1055 Willeo Road, Roswell, 30075,
 770-993-2940, highmeadows.org
Grades offered pre-K–8
Total number of students 352
Accreditation IB Primary Years Programme,
 SAIS
Founded 1973
Students of color 28%
Average class size 18 (K–5), 16 (middle)
Religious affiliation none
Grade foreign language first offered pre-K
Language(s) offered Spanish
Lowest tuition for 5-day students \$16,808
Annual tuition for highest grade \$22,332
Students receiving financial aid 12%
Class size expands in N/A
Uniform no
Bus transportation no
Intramural sports basketball, cross-country
Teacher retention rate 80%
STEM/STEAM program yes

Art studios 2
Theater productions per year 17 (individual
 class, after-school, and school-wide
 productions)
Musical ensembles 4
Annual applications per opening 3
What's new High Meadows is celebrating its
 50th anniversary.

HOLY INNOCENTS' EPISCOPAL SCHOOL

805 Mount Vernon Highway, Atlanta, 30327,
 404-255-4026, hies.org
Grades offered pre-K3–12
Total number of students 1,365
Number of high school students 572
Accreditation SACS, SAIS
Founded 1959
Students of color 22%
Average class size 16–18
Religious affiliation Episcopalian
Seniors with National Merit recognition 7.4%
Grade foreign language first offered pre-K3
Language(s) offered French, Latin, Spanish
Lowest tuition for 5-day students \$13,250
Annual tuition for highest grade \$31,990
Students receiving financial aid 18%
Class size expands in pre-K3, pre-K4, K, 4, 5, 6,
 9
Uniform yes
Bus transportation yes
Teacher retention rate 90%
AP courses offered 27



Marist School

Learn. Lead. Serve.

Serving grades 7–12, Marist School provides an unparalleled Catholic education where achievement exists within a spirit of humility and generosity. The distinctive Marist educational experience forms students into faith-filled, global-ready servant leaders.

Learn more at our parent information sessions,
 campus tours, and shadow days.

REGISTER NOW

marist.com/admissions

SAVE THE DATE

OPEN HOUSE Sunday, December 4

ATLANTA INDEPENDENT SCHOOL GUIDE

Students scoring 3+ on AP exams 70%

Varsity sports baseball, basketball, cheer-leading, cross-country, football, golf, lacrosse, soccer, softball, swimming/diving, tennis, track & field, volleyball, wrestling

Division GHSA class AAAA

STEM/STEAM program yes

Art studios 6

Theater productions per year 4

Musical ensembles 16

Annual applications per opening data N/A

What's new In August 2022, HIES opened the new Dorothy Sullivan Lower School, a beautiful 39,000-square-foot building with light-filled classrooms for grades 1 through 5, fully equipped makerspaces, a spacious science center, a large common area, and an expansive library/media center. A unique outdoor playground provides the perfect place to enjoy recess. This facility marks the final project of a \$32.5 million capital campaign that has transformed the school campus and has also included a new Upper School Humanities Building, a new cross-country course, a large greenspace in the center of campus, new pedestrian pathways, security enhancements, and a new campus entry and parking.

HOLY REDEEMER CATHOLIC SCHOOL

3380 Old Alabama Road, Johns Creek, 30022, 770-410-4056, hrcatholicschool.org

Grades offered K-8

Total number of students 465

Accreditation AAAS, Cognia

Founded 1999

Students of color data N/A

Average class size 28 (K-5), 25 (middle)

Religious affiliation Roman Catholic (all denominations are welcome)

Grade foreign language first offered K

Language(s) offered French, Spanish

Annual tuition \$9,570 (active Catholic); \$11,170 (non-active or non-Catholic); discounts offered for siblings

Students receiving financial aid yes

Uniform yes

Bus transportation no

Intramural sports cross-country, golf, swimming, tennis

Teacher retention rate 90%

STEM/STEAM program yes

Art studios 1 (including kiln)

Theater productions per year 3

Musical ensembles 4

Annual applications per opening varies by grade level

What's new K-8 students have received Chromebooks.

HOLY SPIRIT PREPARATORY SCHOOL

Preschool: 4465 Northside Drive, Atlanta, 30327, 404-252-8008; lower and middle school: 4820 Long Island Drive, Atlanta, 30342, 404-255-0900; upper school: 4449 Northside Drive, Atlanta, 30327; 678-904-2811, holyspiritprep.org

Grades offered age 6 months-grade 12

Total number of students 400

Number of high school students 150

Accreditation AAAS, Catholic Education Honor Roll, Georgia Preschool Association, GISA, The Institute for Catholic Liberal Education, NAEYC, NAIS, NCEA, SACS, SAIS, SECA

Founded 1996

Students of color 40%

Average class size 15 (K-5), 17 (middle), 15 (high)

Religious affiliation Catholic

Seniors with National Merit recognition 1

Grade foreign language first offered pre-K

Language(s) offered Latin, Spanish

Lowest tuition for 5-day students \$8,300

Annual tuition for highest grade \$24,780

Students receiving financial aid 33%

Class size expands in K, 6, 9

Uniform yes

Bus transportation not currently, but potentially in the near future

AP courses offered 15

Students scoring 3+ on AP exams 75%

Varsity sports baseball, basketball, cheer-leading, clay targets, cross-country, football, golf, soccer, swimming, tennis, track, volleyball, wrestling

Division GISA 1-AA

STEM/STEAM program yes

Art studios 3

Theater productions per year N/A

Musical ensembles 7 concerts

Annual applications per opening N/A

What's new All K-8 students take a music class every day. All high school students take a series of Life Dynamics classes to learn essential life skills such as financial literacy, etiquette, communication skills, cooking, sewing, and navigating the college application process. In addition to our classical college prep core classes, high school students may take an elective path ("minor") in computer science, humanities, or fine art.

THE HOWARD SCHOOL

1192 Foster Street, Atlanta, 30318, 404-377-7436, howardschool.org

The Howard School serves students age 5 through grade 12 who have diagnosed language-based learning disabilities or learning differences such as dyslexia or attention deficit disorder.

Grades offered K-12

Total number of students 356

Number of high school students 109

Accreditation SAIS

Founded 1950

Students of color 27%

Average class size 10-12 (K-5), 12 (middle), 9 (high)

Religious affiliation none

Seniors with National Merit recognition N/A

Grade foreign language first offered 10

Language(s) offered American Sign Language, Spanish

Lowest tuition for 5-day students \$37,790

Annual tuition for highest grade \$39,890

Students receiving financial aid 20%

Class size expands in N/A

Uniform no

Bus transportation no

Teacher retention rate 95%

AP courses offered N/A

Varsity sports baseball, basketball, bowling, cross-country, golf, soccer, swimming, track & field, volleyball

Division Atlanta Athletic Conference

STEM/STEAM program yes

Art studios 2

Theater productions per year 2+

Musical ensembles 2

Annual applications per opening data N/A

What's new The Howard School is in its third full year of implementing Lithow Literacy Training for all faculty and staff. This professional development opportunity provides age- and division-specific literacy training that targets all areas of reading instruction. It is based on IDA (International Dyslexia Association) knowledge and practice standards.

IMMACULATE HEART OF MARY CATHOLIC SCHOOL

2855 Briarcliff Road, Atlanta, 30329, 404-636-4488, ihmschool.org

Grades offered pre-K-8

Total number of students 508

Accreditation AAAS, Cognia

Founded 1958

Students of color 25%

Average class size 24 (pre-K-5), 30 (middle)

Religious affiliation Catholic

Grade foreign language first offered pre-K

Language(s) offered Spanish

Annual tuition \$8,755 (Catholic); \$11,170 (non-Catholic)

Students receiving financial aid 23%

Class size expands in N/A

Uniform yes

Bus transportation no

Teacher retention rate 90%

Intramural sports basketball, cheerleading (starting in grade 3), soccer, volleyball

STEM/STEAM program yes

Art studios 1

Theater productions per year 1

Musical ensembles 2

Annual applications per opening 5

What's new IHM School is excited to bring back a number of programs and activities to the school calendar this year. Middle school students will be able to select from a variety of electives such as art appreciation, music theater, and world drumming. They will also have the opportunity to return to Margaret Harris Comprehension School and visit with their students, participate in overnight retreats, and engage in more service work out in the community. Our younger students will see the return of field trips and after-school activities such as STEM and chess.

KING'S RIDGE CHRISTIAN SCHOOL

2765 Bethany Bend, Alpharetta, 30004, 770-754-5738, kingsridgecs.org

Grades offered pre-K-12

Total number of students 900

Number of high school students 261

Accreditation Cognia, GAC, SACS, SAIS

Founded 2001

Students of color 5%

Average class size 16 (K-4), 17 (middle and high; cap is 20)

Religious affiliation nondenominational
Seniors with National Merit recognition 2
Grade foreign language first offered pre-K
Language(s) offered French, Spanish
Lowest tuition for 5-day students \$6,500
Annual tuition for highest grade \$23,480
Students receiving financial aid 12%
Class size expands in 3, 5
Uniform yes
Bus transportation no
Teacher retention rate 95%
AP courses offered 17
Students scoring 3+ on AP exams 87%
Varsity sports baseball, basketball, cheerleading, cross-country, dance, football, golf, gymnastics, lacrosse, soccer, softball, swimming, tennis, track & field, volleyball, wrestling
Division GHSA class A division 1
STEM/STEAM program yes
Art studios 4
Theater productions per year 5 lower school musicals, 2 middle school musicals, 2 high school musicals, and 3 one-act plays
Musical ensembles 8 musical groups between lower, middle, and high schools
Annual applications per opening varies by grade
What's new King's Ridge has added a Fine Arts Academy focusing on dance, drama, instrumental, vocal, and visual art. We now offer a football and softball feeder program in the middle school.

LAKEVIEW ACADEMY

796 Lakeview Drive, Gainesville, 30501,
 770-532-4383, lakeviewacademy.com
Grades offered pre-K3-12
Total number of students 558
Number of high school students 198
Accreditation AAAS, BFTS, GISA, NAIS, SAIS
Founded 1970
Students of color 16%
Average class size 12
Religious affiliation none (independent)
Seniors with National Merit recognition 1
Grade foreign language first offered K3
Language(s) offered Spanish is taught on-campus; additional languages available online
Lowest tuition for 5-day students \$10,220
Annual tuition for highest grade \$19,640
Students receiving financial aid 35%
Class size expands in N/A
Uniform yes
Bus transportation yes
Teacher retention rate data N/A
AP courses offered 17, plus dual enrollment
Students scoring 3+ on AP exams 76%
Varsity sports baseball, basketball, bass fishing, cheerleading, clay target, cross-country, Esports, football, golf, soccer, swimming, tennis, track & field, volleyball
Division GIAA (a division of GISA)
STEM/STEAM program yes
Art studios 3
Theater productions per year 2-3

Musical ensembles 1-3

Annual applications per opening rolling admissions
What's new Lakeview Academy's class of 2022 received \$6.64+ million in non-HOPE scholarships. In robotics, a Lakeview student was named a Georgia Dean's List finalist and was one of only three students to represent Georgia at the FIRST Tech Challenge World Championship. Lakeview earned the College Board AP Computer Science Female Diversity Award for achieving high female representation in AP Computer Science Principles. For the second year in a row, a Lakeview student was named a scholar in the National Cyber Scholarship competition. In the fall of 2021, Lakeview won the A-Private State One Act Play Championships for Spamalot, and two students were named to the state All-Star Cast. One of Lakeview's high school students was named the Georgia High School Musical Theatre Best Featured Performer. Lakeview's fine arts program introduced band and Samba, a drumming group which plays Afro-Brazilian musical genres. Lakeview Academy moved from GHSA to GISA and saw the introduction of a new sport, Esports. One of the Esports teams made it to the East Coast Sweet 16 competition. Lakeview's PE teacher for Lower School was named the GISA Teacher of the Year for Lower School.

LANDMARK CHRISTIAN SCHOOL

50 Broad Street, Fairburn, 30213; 400 Wingate



We start with questions

We research, brainstorm, ideate, empathize, prototype, and iterate.
 We take calculated risks and explore how things could be made better.



**THE
MOUNT
VERNON
SCHOOL**

OPEN HOUSE DATES

Preschool (PK2 - PK5)

Nov 3, Dec 2, Jan 31

Lower School (K - Grade 5)

Oct 4, Nov 17, Dec 13, Jan 19

Middle School (Grades 6 - 8)

Oct 20, Nov 10, Dec 6, Jan 12

Upper School (Grades 9 - 12)

Oct 13, Nov 15, Dec 8, Jan 24



**CONNECT
WITH US**

ATLANTA INDEPENDENT SCHOOL GUIDE

Road, Peachtree City, 30269; 770-306-0647, landmarkchristianschool.org

Grades offered pre-K3-12

Total number of students 975

Number of high school students 324

Accreditation ACSI, Cognia, SAIS

Founded 1989

Students of color 63%

Average class size 13 (pre-K3-5, with a paraprofessional in each class), 17 (middle and high)

Religious affiliation nondenominational

Seniors with National Merit recognition 2

Grade foreign language first offered pre-K3

Language(s) offered French, Mandarin, Spanish

Lowest tuition for 5-day students \$12,000

Annual tuition for highest grade \$20,700

Students receiving financial aid 27%

Class size expands in 6, 9

Uniform yes

Bus transportation yes

Teacher retention rate data N/A

AP courses offered 21

Students scoring 3+ on AP exams data N/A

Varsity sports baseball, basketball, cheer-leading, cross-country, football, golf, skeet shooting, soccer, softball, swimming/diving, tennis, track & field, volleyball, wrestling

Division GHSA class A

STEM/STEAM program yes

Art studios 5

Theater productions per year 3-5

Musical ensembles 10-12

Annual applications per opening 1.5

What's new A new high school building opened in August 2021, including a science lab, engineering classroom, other classroom space, cafe, office space, and high school gymnasium.

THE LIFE SCHOOL

190 Pryor Street, Atlanta, 30303,

404-343-0064, thelifeschool.co

The LIFE School is an accredited, project-based school in downtown Atlanta serving kindergarten through 12th grade.

THE LIONHEART SCHOOL

225 Roswell Street, Alpharetta, 30009,

770-772-4555, thelionheartschool.com

The school specializes in educating individuals on the autism spectrum and with other neurodevelopmental diagnoses.

Grades offered K-12

Total number of students 40

Accreditation Cognia, SACS, SAIS

Founded 2000

Students of color 25%

Average class size 6

Religious affiliation nondenominational

Seniors with National Merit recognition N/A

Grade foreign language first offered N/A

Annual tuition \$28,000

Students receiving financial aid 70%

Class size expands in N/A

Uniform no

Bus transportation no

Teacher retention rate 98%

AP courses offered N/A

STEM/STEAM program yes

Art studios 1

Annual applications per opening 3-5

THE LOVETT SCHOOL

4075 Paces Ferry Road, Atlanta, 30327,

404-262-3032, lovett.org

Grades offered K-12

Total number of students 1,649

Number of high school students 673

Accreditation SACS, SAIS

Founded 1926

Students of color 26%

Average class size 18 (K-5), 17 (middle), 14 (high)

Religious affiliation Christian

Seniors with National Merit recognition 12

Grade foreign language first offered K

Language(s) offered Chinese, French, Latin, Spanish

Lowest tuition for 5-day students \$28,870

Annual tuition for highest grade \$33,500

Students receiving financial aid 13%

Class size expands in K, 5, 6, 9

Uniform yes

Bus transportation yes

Teacher retention rate 87%

paceacademy.org/admissions

CONNECTING
LEARNING
TO LIFE
AT EVERY
LEVEL.

WE THINK
BIG



Start Small. Think Big.

AP courses offered 21**Students scoring 3+ on AP exams** 82%**Varsity sports** baseball, basketball, cheerleading, cross-country, football, golf, gymnastics, lacrosse, soccer, softball, swimming/diving, tennis, track & field, volleyball, wrestling**Division** GHSA class AAAA**STEM/STEAM program** yes**Art studios** 10**Theater productions per year** 5**Musical ensembles** 10**Annual applications per opening** 4**What's new** Two new members recently joined the school's leadership team: Chief Advancement Officer Matt Gould and Head of Culture and Community Dr. Tommy Welch.**MARIST SCHOOL**3790 Ashford Dunwoody Road, Atlanta, 30319, 770-457-7201, marist.com**Grades offered** 7-12**Total number of students** 1,100**Number of high school students** 800**Accreditation** Cognia, SAIS**Founded** 1901**Students of color** 23%**Average class size** 17**Religious affiliation** Catholic (non-diocesan)**Seniors with National Merit recognition** 15%**Grade foreign language first offered** 8**Language(s) offered** French, German, Latin, Spanish**Annual tuition** \$21,830**Students receiving financial aid** 20%**Class size expands in** 9**Uniform** yes**Bus transportation** limited private service**Teacher retention rate** 91%**AP courses offered** 22**Students scoring 3+ on AP exams** 89%**Varsity sports** baseball, basketball, cheerleading, cross-country, football, golf, lacrosse, soccer, softball, swimming/diving, tennis, track & field, volleyball, wrestling**Division** GHSA class AAAAAA**STEM/STEAM program** yes**Art studios** 5**Theater productions per year** 4-5**Musical ensembles** 20**Annual applications per opening** 3**MILL SPRINGS ACADEMY**13660 New Providence Road, Alpharetta, 30004, 770-360-1336, millsprings.org**Grades offered** K-12**Total number of students** 274**Number of high school students** 124**Accreditation** Cognia, SAIS**Founded** 1981**Students of color** 24%**Average class size** 6 (1-5), 8 (middle and high)**Religious affiliation** none**Seniors with National Merit recognition** data

N/A

Grade foreign language first offered 9**Language(s) offered** American Sign Language, Mandarin, Spanish**Annual tuition for highest grade** \$28,120**Students receiving financial aid** 16%**Class size expands in** middle school**Uniform** yes**Bus transportation** yes**Teacher retention rate** 82%**AP courses offered** 4**Varsity sports** baseball, basketball, bowling, cross-country, golf, lacrosse, soccer, swimming, tennis, track & field, volleyball, wrestling**Division** GISA class AAA and AAC**STEM/STEAM program** no (elements are incorporated directly into science classes)**Art studios** 3**Theater productions per year** 2**Musical ensembles** 2**Annual applications per opening** data N/A**What's new** Mill Springs has introduced a social-emotional curriculum called Move This World. Using interactive videos, movement, and creative expression, Move This World helps students develop emotional intelligence skills for long-term well-being. Mill Springs is also partnering with Mercer University's Department of Special Education to provide faculty with continuing support-specific training on teaching students with learning differences.**18 MONTHS – 8TH GRADE**

Springmont's authentic Montessori experience balances academic learning with social/emotional well-being. Highly experienced and caring teachers guide individualized learning that inspires students to become creative, independent and globally-minded.

**2023-24 APPLICATIONS
OPEN OCT 1.**

**TOURS BY APPOINTMENT
404.252.3910**

Springmont School
ATLANTA'S FIRST MONTESSORI SCHOOL

ATLANTA INDEPENDENT SCHOOL GUIDE

MT. BETHEL CHRISTIAN ACADEMY

Junior K–8: 4385 Lower Roswell Road, Marietta, 30068, 770-971-0245; 9–12: 2509 Post Oak Tritt Road, Marietta, 30062, 770-971-0245, mtbethelchristian.org
Grades offered junior K–12
Total number of students 696
Number of high school students 160
Accreditation SACS, SAIS
Founded 1998
Students of color 17%
Average class size 17 (K–5), 15–17 (middle), 13–22 (high)
Religious affiliation nondenominational
Seniors with National Merit recognition N/A
Grade foreign language first offered junior K
Language(s) offered American Sign Language, Latin, Spanish
Lowest tuition for 5-day students \$12,000
Annual tuition for highest grade \$17,650
Students receiving financial aid 35%
Class size expands in K, 2, 6, 9
Uniform yes
Bus transportation yes
Teacher retention rate data N/A
AP courses offered 15
Students scoring 3+ on AP exams 77%
Varsity sports baseball, basketball, lacrosse, soccer, swimming, volleyball
Division GHSA
STEM/STEAM program yes
Art studios 3
Theater productions per year 3
Annual applications per opening data N/A
What's new Construction is underway on a professional, turf performance field at our Upper School Campus to serve our Middle and Upper School football, lacrosse, soccer, and sideline cheer teams. Arrow Field, Home of the Eagles, will be complete in time for spring athletics in 2023. The 2022–2023 school year brought the addition of a football program for 5th/6th and 7th/8th grades. The Upper School also opened the Film Academy in 2022 for students interested in digital production, screenwriting, cinematography, and more. MBCA continues to enhance and create programs that will challenge students to learn and succeed as they grow in knowledge and in faith.

MOUNT PARAN CHRISTIAN SCHOOL

1275 Stanley Road, Kennesaw, 30152, 770-578-0182, mtparanschool.com
Grades offered pre-K3–12
Total number of students 1,280
Number of high school students 445
Accreditation CESA, Cognia, GISA, NAIS, SAIS
Founded 1976
Students of color 28%
Average class size 16 (K–2; teacher-student ratio 8:1), 17 (3–5, middle), 12 (high)
Religious affiliation nondenominational
Seniors with National Merit recognition 1%
Grade foreign language first offered pre-K3
Language(s) offered French, Spanish
Lowest tuition for 5-day students \$7,294
Annual tuition for highest grade \$22,184
Students receiving financial aid 19%
Class size expands in K, 6, 9 (open enrollment)
Uniform yes
Bus transportation yes (limited)

Teacher retention rate 90%
AP courses offered 56+ (AP, STEAM, and honors courses)
Students scoring 3+ on AP exams 85%
Varsity sports baseball, basketball, competition cheerleading, cross-country, fishing, football, golf, lacrosse, soccer, softball, swimming, tennis, track & field, volleyball, wrestling
Division GHSA class AA
STEM/STEAM program yes
Art studios 4
Theater productions per year 18
Musical ensembles 10
Annual applications per opening data N/A
What's new New this year are the Murray Innovation Center high school building addition and an Esports team.

MOUNT PISGAH CHRISTIAN SCHOOL

9875 Nesbit Ferry Road, Johns Creek, 30022, 678-336-3400, mountpisgahschool.org
Grades offered infant–grade 12
Total number of students 1003
Number of high school students 305
Accreditation CESA, Cognia, SAIS
Founded 1986
Students of color 34%
Average class size 14
Religious affiliation nondenominational
Seniors with National Merit recognition 1
Grade foreign language first offered 7
Language(s) offered Latin, Spanish
Lowest tuition for 5-day students \$7,015
Annual tuition for highest grade \$23,900
Students receiving financial aid 25%
Class size expands in N/A
Uniform yes
Bus transportation no
AP courses offered 19
Students scoring 3+ on AP exams 81%
Varsity sports baseball, basketball, cheerleading, cross-country, equestrian, fishing, football, golf, lacrosse, soccer, softball, swimming, tennis, track & field, volleyball, wrestling
Division GHSA class A division 1
STEM/STEAM program yes
Art studios 3
Theater productions per year 3
Musical ensembles 3
Annual applications per opening varies

THE MOUNT VERNON SCHOOL

Lower campus (pre-K–5): 471 Mount Vernon Highway, Atlanta, 30328; Upper campus (6–12): 510 Mount Vernon Highway, Atlanta, 30328; 404-252-3448, mountvernon-school.org
Grades offered preschool–12
Total number of students 1,247
Number of high school students 469
Accreditation AAAIS, Cognia, NAEYC, SAIS
Founded 1972
Students of color 21%
Average class size 15–18
Religious affiliation Christian, non-denominational
Seniors with National Merit recognition data N/A
Grade foreign language first offered preschool

Language(s) offered French, Latin, Spanish
Lowest tuition for 5-day students \$14,280
Annual tuition for highest grade \$29,975
Students receiving financial aid 17%
Class size expands in preschool, K, 5, 6, 9
Uniform yes
Bus transportation MARTA shuttle
Teacher retention rate data N/A
AP courses offered 15
Students scoring 3+ on AP exams data N/A
Varsity sports baseball, basketball, bass fishing, cheerleading, competition cheerleading, cross-country, Esports, flag football, football, golf, gymnastics, lacrosse, soccer, softball, swimming & diving, tennis, track & field, volleyball, wrestling
Division GHSA Class A
STEM/STEAM program yes
Art studios 7
Theater productions per year 12
Musical ensembles 16
Annual applications per opening data N/A
What's new As a precursor to the iD program in Upper School, the Mount Vernon Middle School launched a new signature program, Impact Design Lab (IDL), for 8th grade students. The program will work in multi-week design sprints and focus on developing solutions, with community impact as a key driver. New faculty include Eduardo Milrud, who joined Mount Vernon in July after nearly five years in higher education at Savannah College of Art and Design as director of innovation. A new state-of-the-art video scoreboard now stands alongside Ron Hill Field that many students and faculty are calling a jumbotron due to its size and clarity.

NOTRE DAME ACADEMY

4635 River Green Parkway, Duluth, 30096, 678-387-9385, ndacademy.org
Grades offered K–12
Total number of students 300
Number of high school students 100
Accreditation Cognia, GISA, IBO, SACS, SAIS
Founded 2005
Students of color 46%
Average class size 19 (K–5), 15 (middle), 16 (high)
Religious affiliation Catholic (independent)
Seniors with National Merit recognition N/A
Grade foreign language first offered K
Language(s) offered Spanish (K–5), French & Spanish (6–12)
Lowest tuition for 5-day students \$14,600
Annual tuition for highest grade \$18,175
Students receiving financial aid 22%
Class size expands in 6, 9
Uniform yes
Bus transportation yes
Teacher retention rate 85%
AP courses offered 2
Students scoring 3+ on AP exams data N/A
Varsity sports baseball, basketball, cheerleading, cross-country, football, soccer, swimming, tennis, track & field, volleyball
Division GISA
STEM/STEAM program yes (STREAM program—the R stands for religion)
Art studios 2

Theater productions per year 4**Musical ensembles** 8**Annual applications per opening** data N/A

What's new We have a brand new track around our athletic field that will be able to host track and field events.

OUR LADY OF THE ASSUMPTION CATHOLIC SCHOOL

1320 Hearst Drive, Atlanta, 30319,

404-364-1902, olaschool.org

Grades offered pre-K-4-8

Total number of students 585

Accreditation AAAS, Cognia

Founded 1951

Students of color 13%

Average class size 15 (pre-K-K), 22 (1-8)

Religious affiliation Catholic

Grade foreign language first offered pre-K

Language(s) offered Spanish

Annual tuition \$10,270-\$11,770

Students receiving financial aid 7%

Class size expands in K, 6, 7

Uniform yes

Bus transportation no

Teacher retention rate 95%

Intramural sports basketball, soccer, tennis, track & field, volleyball

STEM/STEAM program yes

Art studios 1

Theater productions per year 2

Musical ensembles 3

Annual applications per opening 2

What's new The school has welcomed a new principal, Mandy Crock.

PACE ACADEMY

966 West Paces Ferry Road, Atlanta, 30327,

404-262-1345, paceacademy.org

Grades offered K-12

Total number of students 1,150

Number of high school students 493

Accreditation SACS, SAIS

Founded 1958

Students of color 32%

Average class size 20 (K-5; 2 teachers per class), 18 (middle), 12 (high)

Religious affiliation Judeo-Christian

Seniors with National Merit recognition 22

Commended Scholars, including 5 Finalists

Grade foreign language first offered K

Language(s) offered French, Latin, Spanish

Lowest tuition for 5-day students \$20,160

Annual tuition for highest grade \$34,720

Students receiving financial aid 14%

Class size expands in 6, 9

Uniform special occasions only

Bus transportation no

Teacher retention rate 81%

AP courses offered 24 (6 post-AP)

Students scoring 3+ on AP exams 76%

Varsity sports baseball, basketball, cheer-leading, cross-country, flag football, football, golf, gymnastics, lacrosse, soccer, softball,

swimming/diving, tennis, track & field, volleyball, wrestling

Division GHSA class AAAA

STEM/STEAM program yes

Art studios 11

Theater productions per year 4 upper school, 3 middle school

Musical ensembles 8

Annual applications per opening 6.4

What's new The 2022-2023 school year marks Pace Academy students' first full year in the new Kam Memar Lower School, a three-story, 36,500-square-foot addition to the school's existing Lower School classroom building. The project also included the renovation of the school's Lower School library, cafeteria, and playground.

THE PAIDEIA SCHOOL

1509 Ponce de Leon Avenue, Atlanta, 30307,

404-377-3491, paideiaschool.org

Grades offered pre-K-12

Total number of students 1,020

Number of high school students 463

Accreditation AAAS, Cognia, SAIS

Founded 1971

Students of color 41%

Average class size 15

Religious affiliation none

Seniors with National Merit recognition 8%

Grade foreign language first offered 7

Language(s) offered French, Spanish

Wholehearted Dedication To A Child's Education

- Infants through 8th grade
- Personalized attention and instruction
- Unique opportunities to pursue passions
- Strong spiritual formation

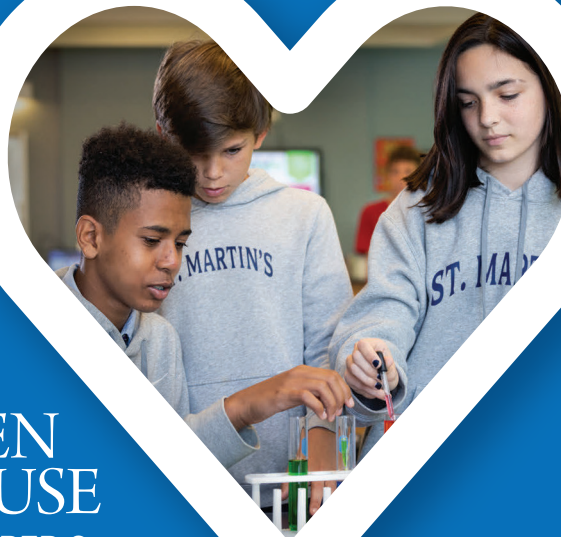


St. Martin's
EPISCOPAL SCHOOL

STMARTINSCHOOL.ORG

**OPEN
HOUSE**

**NOVEMBER 6
1-3 PM**



WHOLEHEARTED

ATLANTA INDEPENDENT SCHOOL GUIDE

Lowest tuition for 5-day students \$25,740
Annual tuition for highest grade \$29,151
Students receiving financial aid 15%
Class size expands in N/A
Uniform no
Bus transportation no
Teacher retention rate 95%
AP courses offered 7
Students scoring 3+ on AP exams 83%
Varsity sports baseball, basketball, cross-country, golf, soccer, swimming, tennis, track & field, Ultimate, volleyball
Division GHSA class A
STEM/STEAM program yes, for all levels
Art studios 6
Theater productions per year 6
Musical ensembles 6
Annual applications per opening data N/A
What's new Beginning July 1, 2023, Paideia will welcome new Head of School Tom Taylor, who will succeed founding Head of School Paul Bianchi. For the school year 2023–24, Paideia will open a new junior high on Ponce de Leon as well as conduct extensive renovations to existing campus buildings, funded by our successful Paideia@50 campaign.

PHILMORE ACADEMY FOR SCIENCE AND ARTS

2230 Centre Park Court, Stone Mountain,
 30087, 404-850-0257, philmoreacademy.org
Grades offered pre-K–12

Total number of students 140
Accreditation AAAIS, GAC
Founded 2017
Students of color 90%
Average class size 12
Religious affiliation no affiliation
Grade foreign language first offered K
Language(s) offered French, Spanish
Lowest tuition for 5-day students \$7,100
Annual tuition for highest grade \$7,500
Students receiving financial aid N/A
Class size expands in N/A
Uniform yes
Bus transportation no
Teacher retention rate 95%
Varsity sports competition dance and cheer, soccer
Division The school will participate in GISA in 2023–2024
STEM/STEAM program yes
Art studios 2
Theater productions per year 3
Musical ensembles 3
Annual applications per opening 60
What's new We have added LEGO Robotics as well as chess club beginning at kindergarten.

PINECREST ACADEMY

955 Peachtree Parkway, Cumming, 30041,
 770-888-4477, pinecrestacademy.org
Grades offered pre-K–12
Total number of students 471

Number of high school students 156
Accreditation SACS, SAIS
Founded 1993
Students of color 28%
Average class size 15
Religious affiliation Catholic
Seniors with National Merit recognition 1
Grade foreign language first offered pre-K
Language(s) offered Spanish
Lowest tuition for 5-day students \$11,140 (5-day full-day)
Annual tuition for highest grade \$20,180
Students receiving financial aid data N/A
Class size expands in 6
Uniform yes
Bus transportation no
Teacher retention rate data N/A
AP courses offered 18
Students scoring 3+ on AP exams data N/A
Varsity sports baseball, basketball, cheer-leading, cross-country, fencing, football, golf, lacrosse, soccer, swimming, tennis, volleyball, wrestling
Division GAPPS
STEM/STEAM program yes, beginning in K
Art studios 3
Theater productions per year 6
Musical ensembles 3
Annual applications per opening data N/A
What's new The school has added a STEMscopes science program (1–8) and a high school outdoor commons.

Bright, young minds thrive here

Serving children age three through Sixth Grade, Trinity School cherishes childhood while preparing our students for the future. Our small class sizes, early childhood and elementary education experts, and innovative programming are just some of the reasons your child will thrive at Trinity, Atlanta's only private elementary-only school!

Discover more at
trinityatl.org/admissions

TRINITY
SCHOOL

flourish

Established 1951



PORTER ACADEMY

200 Cox Road, Roswell, 30075, 770-594-1313, porteracademy.org

Porter Academy offers differentiated and individualized programs for students with learning or developmental differences.

Grades offered pre-K-8

Total number of students 71

Accreditation AAIS, Cognia, GISA, SAIS

Founded 2000

Students of color 47%

Average class size 12

Religious affiliation none

Grade foreign language first offered pre-K

Language(s) offered American Sign Language

Annual tuition \$20,476

Students receiving financial aid 65%

Class size expands in N/A

Uniform no

Bus transportation no

Teacher retention rate 80%

Intramural sports N/A

STEM/STEAM program no

Art studios 1

Theater productions per year 1

Annual applications per opening rolling admissions; no current openings

What's new Our citizenship and social emotional program has been enhanced this year.

Lawrenceville Highway, Lilburn, 30047; Johns Creek Campus (9-12): 7340 McGinnis Ferry Road, Johns Creek, 30024; 770-279-7200, providencechristianacademy.org

Grades offered preschool-12

Total number of students 700

Number of high school students 360

Accreditation ACSI, Cognia, SACS, SAIS

Founded 1991

Students of color 48%

Average class size 15 (K-5), 18 (middle), 13 (high)

Religious affiliation Christian

Seniors with National Merit recognition 1%

Grade foreign language first offered K

Language(s) offered French, Spanish

Lowest tuition for 5-day students \$7,200

Annual tuition for highest grade \$22,220

Students receiving financial aid data N/A

Class size expands in N/A

Uniform yes

Bus transportation no

Teacher retention rate 95%

AP courses offered 12

Students scoring 3+ on AP exams 79%

Varsity sports baseball, basketball, cheerleading, clay shooting, cross-country, football, golf, soccer, softball, swimming, tennis, track & field, volleyball

Division GHSA class A

STEM/STEAM program yes

Art studios 4

Theater productions per year 5

Musical ensembles 4

Annual applications per opening data N/A

What's new The school welcomed Lilburn High School Principal/Associate Head of School for Academics IV Bray; Head of School Joey Thacker; and a new Johns Creek campus location.

RIVERSIDE MILITARY ACADEMY

2001 Riverside Drive, Gainesville, 30501, 770-538-2938, riversidemilitary.com

This military boarding school, located on a 200-acre campus, is home to cadets from 30 nations and 30 states across America.

Grades offered 6-12 (boys only)

Accreditation NAIS, SAIS

Total number of students 275

Number of high school students 249

Founded 1907

Students of color data N/A

Average class size 8 (middle), 11 (high)

Religious affiliation none

Seniors with National Merit recognition data N/A

Grade foreign language first offered 7

Language(s) offered ESL, Chinese, Russian, Spanish

Annual tuition \$48,900

Students receiving financial aid N/A

Class size expands in N/A

Uniform yes

PROVIDENCE CHRISTIAN ACADEMY

Lilburn campus (pre-K-grade 12): 4575

The Walker
School



Holden
University of Kentucky

"Walker has given me the opportunity to shape my own path and to be who I want to be."



Sarah
Cornell University

"Walker has helped me to become a stronger student, and it has also helped me to foster strong relationships with my peers."



Justin
MIT

"The support Walker provides leads to opportunities that can't be found anywhere else."

RANKED #1 PRIVATE SCHOOL IN COBB COUNTY

Visit thewalkerschool.org/admission or call (678) 540-7229 to learn more.

Register for Open House on Sunday, Nov. 13 or Sunday, Jan. 22.

PK(3)-12

700 Cobb Parkway N.
Marietta, Ga. 30062

Open to all faiths

ATLANTA INDEPENDENT SCHOOL GUIDE

Bus transportation no (airport shuttle service)
Teacher retention rate 90%
AP courses offered 15 (plus online offerings)
Students scoring 3+ on AP exams data N/A
Varsity sports baseball, basketball, cross-country, fencing, football, golf, lacrosse, Raiders, riflery, soccer, swimming, tennis, track & field, wrestling
Division GISA
STEM/STEAM program no
Art studios 1
Theater productions per year 2
Musical ensembles 10
Annual applications per opening rolling admissions
What's new The school is offering dual enrollment, aerospace engineering, cybersecurity, and civil air patrol.

THE RON CLARK ACADEMY

228 Margaret Street, Atlanta, 30315, 678-651-2100, ronclarkacademy.com
Grades offered 4–8
Total number of students 138
Accreditation SAIS
Founded 2007
Students of color 93%
Average class size 30
Religious affiliation none
Grade foreign language first offered 7
Language(s) offered Spanish
Lowest tuition for 5-day students based on a sliding scale
Annual tuition sliding scale (full tuition is \$18,000)
Students receiving financial aid data N/A
Uniform yes
Bus transportation no
Intramural sports basketball, golf, tennis, track & field
STEM/STEAM program yes
Art studios yes
Theater productions per year 1
Musical ensembles yes
Annual applications per opening 32 students accepted per year
What's new The school provides weekly professional development opportunities for educators on increasing student engagement and building culture. Educators can learn more at RCAEXP.com.

SAGE SCHOOL

2435 Tech Center Parkway, Lawrenceville, 30024, 678-318-3588, sageschool.net
 Sage School specializes in working with students with dyslexia, dysgraphia, dyscalculia, and language-based differences. Teachers are trained in the Orton-Gillingham diagnostic and prescriptive approach to structured language.
Grades offered K–6
Total number of students 80
Accreditation AAAS, Decoding Dyslexia, The Dyslexia Foundation, GAC, The International Dyslexia Association, Learning Disabilities Association of America, National Association of Special Education Teachers
Founded 2009
Students of color 20%

Average class size 8:1 student–teacher ratio
Religious affiliation nondenominational
Grade foreign language first offered N/A
Annual tuition \$27,000
Students receiving financial aid 5%
Class size expands in N/A
Uniform yes
Bus transportation in progress
Teacher retention rate 90%
Intramural sports N/A
STEM/STEAM program yes
Art studios 1
Theater productions per year 2
Annual applications per opening data N/A
What's new We have moved to a beautiful new building closer to interstate access and directly next to the Gwinnett Strippers stadium.

ST. BENEDICT'S EPISCOPAL SCHOOL

Main campus: 2160 Cooper Lake Road, Smyrna, 30080; upper elementary campus: 4295 Weaver Street, Smyrna, 30080; 678-279-4300, stbs.org
Grades offered preschool 1s–grade 8
Total number of students 610
Accreditation AAAS, GISA, National Association of Episcopal Schools, NAIS, SAIS
Founded 2009
Students of color 45% culturally or ethnically diverse
Average class size 14 (preschool), 17 (K–4), 15 (5–8)
Religious affiliation Episcopalian
Grade foreign language first offered age 3
Language(s) offered Spanish (core subject)
Lowest tuition for 5-day students \$8,728
Annual tuition for highest grade \$14,990
Students receiving financial aid 10%
Class size expands in K
Uniform yes
Bus transportation no
Teacher retention rate 95%
Intramural sports basketball, cross-country, passing football, track & field
STEM/STEAM program yes
Annual applications per opening 3–4

SAINT CATHERINE OF SIENA CATHOLIC SCHOOL

1618 Ben King Road, Kennesaw, 30144, 770-419-8601, scsiena.org
Grades offered K–8
Total number of students 314
Accreditation Cognia, NCEA, SAIS
Founded 2002
Students of color 44%
Average class size 17
Religious affiliation Roman Catholic
Grade foreign language first offered K
Language(s) offered Spanish
Annual tuition \$8,558; \$8,508 (sibling)
Students receiving financial aid 48%
Class size expands in N/A
Uniform yes
Bus transportation no
Teacher retention rate 83%
Intramural sports basketball, soccer, volleyball
STEM/STEAM program yes
Art studios 1
Theater productions per year 3

Musical ensembles 4
Annual applications per opening data N/A
What's new Our school has received several grants that have helped St. Catherine's School in purchasing new laptops for teachers, new technology for students, and new equipment and materials for STEM and P.E. classes. These wonderful gifts have been a tremendous aid for our school and inspired so much more excitement for our students in their classes.

SAINT FRANCIS SCHOOLS

Grades K–8: 9375 Willeo Road, Roswell, 30075, 770-641-8257; grades 9–12: 13440 Cogburn Road, Alpharetta, 30004, 678-339-9989; saintfrancisschools.com
Grades offered K–12
Total number of students 800
Number of high school students 280
Accreditation AAAS, Cognia, SAIS
Founded 1976
Students of color 12%
Average class size 12–14 (K–5), 12–16 (middle and high)
Religious affiliation none
Seniors with National Merit recognition data N/A
Grade foreign language first offered 9
Language(s) offered Spanish
Annual tuition \$15,500–\$25,000
Students receiving financial aid 4%
Class size expands in 5, 6, 9
Uniform yes
Bus transportation yes
Teacher retention rate 90%
AP courses offered 13
Students scoring 3+ on ap exams 78%
Varsity sports baseball, basketball, cheerleading, cross-country, equestrian, football, golf, soccer, softball, swimming, tennis, track & field, volleyball, wrestling
Division GHSA class A
STEM/STEAM program yes
Art studios 6
Theater productions per year 5 (elementary), 2 (middle), 3 (high)
Annual applications per opening date N/A

ST. MARTIN'S EPISCOPAL SCHOOL

3110-A Ashford Dunwoody Road, Atlanta, 30319, 404-237-4260, stmartinschool.org
Grades offered infant–grade 8
Total number of students 625
Accreditation AAAS, SAIS
Founded 1959
Students of color 18%
Average class size 17
Religious affiliation Episcopalian
Grade foreign language first offered age 3
Language(s) offered Spanish (additional languages begin in middle school)
Lowest tuition for 5-day students \$14,060 (toddler)
Annual tuition for highest grade \$25,150
Students receiving financial aid 12%
Class size expands in all early childhood grades and 6
Uniform yes
Bus transportation yes (Dunwoody area)
Teacher retention rate data N/A



Tomorrow calls for a **new kind of leader.**

Every day, we connect bright, curious students with a community of support and opportunities that awaken their aspirations so that they can lead positive change in the world.

Learn more at westminster.net

WESTMINSTER

Love. Challenge. Lead. Change.

1424 West Paces Ferry Road, NW | Atlanta, Georgia 30327



Whitefield ACADEMY

A Christ-Centered College Preparatory School

PreK - 12th grade • Located in Smyrna, GA • 678-305-3000



Scan the QR
code to learn
more!

ATLANTA INDEPENDENT SCHOOL GUIDE

Intramural sports baseball, basketball, cross-country, flag football, golf, soccer, tennis, Ultimate, volleyball

STEM/STEAM program yes

Art studios 2

Theater productions per year 3

Musical ensembles 2

Annual applications per opening data N/A

What's new The school added a woodworking studio for pre-K through 8th grade.

ST. PIUS X CATHOLIC HIGH SCHOOL

2674 Johnson Road, Atlanta, 30345,

404-636-3023, spx.org

Grades offered 9–12

Total number of students 1,085

Accreditation AAAS, Cognia

Founded 1958

Students of color 28%

Average class size 18

Seniors with National Merit recognition 6.7%

Language(s) offered French, Latin, Spanish

Annual tuition \$15,300 (active Catholic);

\$17,200 (non-active Catholic, non-Catholic)

Students receiving financial aid 14%

Class size expands in N/A

Uniform yes

Bus transportation no

Teacher retention rate 80%

AP courses offered 27

Students scoring 3+ on AP exams 75%

Varsity sports baseball, basketball, competi-

tion cheerleading, cross-country, dance team, flag football, football, golf, lacrosse, soccer, softball, spirit cheerleading, swimming/diving, tennis, track & field, volleyball, wrestling

Division GHSA class AAAAAA

STEM/STEAM program no

Art studios 1

Theater productions per year 16–17 fine arts productions per year: 8 music performances, 4 theater productions, 3 dance performances, 1 visual arts exhibition, 1 biennial arts festival

Musical ensembles 6

Annual applications per opening 2

What's new The ongoing Ring the Bells capital campaign is funding a renovated library, a new front entrance and security vestibule, a new gated rear entrance, and athletic facilities.

THE SCHENCK SCHOOL

282 Mount Paran Road, Atlanta, 30327,

404-252-2591, schenck.org

The Schenck School educates dyslexic children using the Schenck School Reading Model, which is anchored in the Orton-Gillingham Approach.

Grades offered K–6

Total number of students 250

Accreditation Academy of Orton-Gillingham, Georgia Association of Private Schools for Exceptional Children, SACS, SAIS

Founded 1959

Students of color 7.2%

Average class size 10

Religious affiliation none

Annual tuition \$39,800

Students receiving financial aid 24%

Class size expands in N/A

Uniform yes

Bus transportation no

Teacher retention rate 85%

Intramural sports N/A

STEM/STEAM program no

Art studios 1

Annual applications per opening varies

What's new The Schenck School's community outreach arm, the Dyslexia Resource, will launch its second digital teacher training program in summer 2023. This program allows the school to share its reading expertise with other educators across the country who want to learn more about structured literacy and specific ways to help children who struggle learning to read.

SPRINGMONT SCHOOL

5750 Long Island Drive, Atlanta, 30327,

404-252-3910, springmont.com

Grades offered age 18 months–grade 8

Total number of students 275

Accreditation AAAS, AMI, Cognia, SAIS

Founded 1963

Students of color 46%

Average class size 15

Religious affiliation none

Grade foreign language first offered pre-K3

From Pre-K through 12th grade,
CREATING
OPPORTUNITIES
for each child to thrive is

THE **WOODWARD WAY**

The most monumental journeys begin
with one step. Let's begin together.



WOODWARD ACADEMY

woodward.edu/visit

Language(s) offered Latin (middle school), Spanish

Lowest tuition for 5-day students \$13,100

Annual tuition \$13,100–\$25,000

Students receiving financial aid 20%

Class size expands in N/A

Uniform no

Bus transportation no

Teacher retention rate 85%

Intramural sports basketball, cross-country

STEM/STEAM program yes

Art studios 1

Theater productions per year 3

Musical ensembles 1

Annual applications per opening varies

What's new After a pandemic hiatus and completing renovations, including a new kitchen and restrooms and central air conditioning, we are delighted to be able to resume class and family trips to our 86-acre Landschool in Summerville, GA.

THE STONEHAVEN SCHOOL

Main campus (K–6): 1480 Joyner Avenue, Marietta, 30060; **upper school campus (7–12):** 1650 Old Concord Road, Marietta, 30060; 770-874-8885, stonehavenschool.org

Grades offered K–11 (adding a grade each year until 12)

Total number of students 263

Accreditation SAIS

Founded 2004

Students of color 38%

Average class size 18

Religious affiliation Protestant

Grade foreign language first offered 3

Language(s) offered Latin, Spanish

Lowest tuition for 5-day students \$2,500

Annual tuition for highest grade \$12,300

Students receiving financial aid 50%

Class size expands in 1, 5

Uniform yes

Bus transportation no

Teacher retention rate 95%

Intramural sports basketball (boys), cross-country, tennis, track, volleyball (girls)

STEM/STEAM program yes (upper school practicum option)

Art studios 2

Musical ensembles 3

Annual applications per opening data N/A

What's new Our 12th grade launches this fall.

SWIFT SCHOOL

300 Grimes Bridge Road, Roswell, 30075, 678-205-4988, theswiftschool.org

Swift School serves children with dyslexia and language-based learning differences.

Grades offered 1–8

Total number of students 175

Accreditation AAAIS, Cognia, GISA, SAIS

Founded 1998

Students of color 26%

Average class size 10–12

Religious affiliation none

Grade foreign language first offered 6

Annual tuition \$34,025 (lower division); \$34,550 (middle division)

Students receiving financial aid 22%

Class size expands in N/A

Uniform yes

Bus transportation no

Teacher retention rate 86%

Extramural sports basketball, cross-country, golf, soccer (co-ed), tennis, touch football (co-ed)

Art studios 1

Annual applications per opening rolling admissions

What's new Success with dyslexia starts here. Swift School has a myriad of new, exciting events and opportunities. In April 2021, Swift hosted its inaugural Boosterthon fundraiser and raised money for new PE equipment and incredible STEAM Lab upgrades. Mr. Ken Cressman oversees the STEAM program, which debuted as a part-time program for grades 1–4 in 2021–2022 before expanding to a full-time program for grades 1–6 in 2022–2023. Additionally, six exciting Above & Beyond Clubs returned to campus. Swift School also partnered with Champions® Aftercare to provide aftercare services for all students.

TEMIMA, THE RICHARD AND JEAN KATZ HIGH SCHOOL FOR GIRLS

1839 Lavista Road, Atlanta, 30329, 404-315-0507, temima.org

Grades offered 9–12

Total number of students 64

Accreditation SAIS

Founded 1995

Students of color N/A

Average class size 16

Religious affiliation Orthodox Jewish

Seniors with National Merit recognition 1

Grade foreign language first offered 9

Language(s) offered Hebrew

Annual tuition \$17,000

Students receiving financial aid data N/A

Class size expands in N/A

Uniform dress code

Bus transportation no

Teacher retention rate 80%

AP courses offered 1 (online classes available)

Students scoring 3+ on AP exams 100%

STEM/STEAM program yes

Theater productions per year 1

Musical ensembles 1

Annual applications per opening rolling admissions

What's new The school has new administrative staff: Head of School Rabbi Avraham Shapiro and General Studies Principal Mrs. Polina Nagla.

TORAH DAY SCHOOL OF ATLANTA

1985 Lavista Road, Atlanta, 30329, 404-982-0800, torahday.org

Grades offered K–8

Total number of students 350

Accreditation SACS, SAIS

Founded 1985

St. Benedict's
EPISCOPAL SCHOOL

OPEN HEARTS. OPEN MINDS.
We Inspire a Love of Learning

APPLY TODAY
WWW.STBS.ORG

INDEPENDENT SCHOOL GUIDE

Sais, students of color 1%
Average class size 20
Religious affiliation Jewish
Grade foreign language first offered K
Language(s) offered Hebrew
Annual tuition \$13,000–\$15,000
Students receiving financial aid 75%+
Class size expands in N/A
Uniform yes
Bus transportation no
Teacher retention rate 95–99%
Intramural sports baseball, basketball, soccer, track & field, volleyball
STEM/STEAM program yes
Art studios 1
Theater productions per year 1
Musical ensembles 1
Annual applications per opening data N/A

TRINITY SCHOOL

4301 Northside Parkway, Atlanta, 30327,
 404-231-8100, trinityatl.org
Grades offered age 3–grade 6
Total number of students 600
Accreditation AAAS, Cognia, GISA, NAIS, SACS, SAIS
Founded 1951
Students of color 22%
Average class size 12–18
Religious affiliation none
Grade foreign language first offered age 3
Language(s) offered French, Spanish

Lowest tuition for 5-day students \$19,500
Annual tuition for highest grade \$30,000
Students receiving financial aid 14%
Class size expands in pre-K, K
Uniform yes
Bus transportation N/A
Teacher retention rate data N/A
Ontramural sports cheerleading, dance, field hockey, karate, lacrosse, running club, soccer, tennis, yoga (after-school program)
STEM/STEAM program yes
Art studios 2
Theater productions per year 2
Musical ensembles 2
Annual applications per opening 3
What's new Trinity School recently celebrated the grand opening of its Early Childhood Outdoor Learning Center. This new outdoor space encourages physical play and learning in nature and features independent and collaborative gathering spaces; unique climbing elements, such as the 16.5-foot-tall Great Tree; a trike path; a musical amphitheater that includes percussion instruments and several oversized xylophones; and other areas that inspire art and science discovery. The opening preceded the launch of the public phase of Inspire Excellence, Trinity's \$14.5 million campaign that will grow the school's endowment and fund new facilities and significant renovations to several indoor and outdoor spaces.

THE WALDORF SCHOOL OF ATLANTA

827 Kirk Road, Decatur, 30030, 404-377-1315, waldorfatlanta.org
Grades offered nursery–8
Total number of students 230
Accreditation Association of Waldorf Schools of North America, Cognia, SAIS
Founded 1986
Students of color 35%
Average class size 18
Religious affiliation nonsectarian
Grade foreign language first offered 1
Language(s) offered Spanish
Lowest tuition for 5-day students \$13,250
Annual tuition for highest grade \$19,760
Students receiving financial aid 30%
Class size expands in N/A
Uniform no
Bus transportation no
Teacher retention rate 95%
Intramural sports basketball, cross-country, soccer, Ultimate
STEM/STEAM program no (elements of STEAM are integrated into the curriculum)
Theater productions per year 8 (productions performed annually by each grade)
Musical ensembles all students in grades 1–8 play an instrument
Annual applications per opening varies
What's new This summer, a Waldorf alum designed and built new playground equipment for all ages and grades, including slack lines, climbing structures, swings, and pull-up bars.

NOW IS OUR TIME



2022-23



The Cottage School has served students with learning differences in the metro and surrounding areas since 1985. TCS changes lives by focusing on the social and emotional needs of our students as well as their academic achievement. Our business-based model fosters self-advocacy and prepares students for the future.

Serving students grades 3–12.




Learn more at WWW.COTTAGESCHOOL.ORG


NOW ENROLLING

A Challenging Approach to Education that Features:

- Socially Distant In-Person Classes
- Customized College-Prep Programs for K-12
- STEAM-Oriented Classrooms
- Attention to Individual Needs
- Independent Study Courses for Remediation/Acceleration
- Flexibility in Scheduling
- Supportive, Nurturing Environment
- 5:1 Student:Teacher Ratio



ESTABLISHED 1995



CALL 770.645.2673 OR
 VISIT EATONACADEMY.ORG

This new equipment will meet the needs of our youngest to oldest students. Given the amount of time we spend outdoors, we welcome new equipment that will excite and appropriately challenge our students.

THE WALKER SCHOOL

700 Cobb Parkway, Marietta, 30062,
770-427-2689, thewalkerschool.org

Grades offered pre-K3-12

Total number of students 916

Number of high school students 339

Accreditation SACS, SAIS

Founded 1957

Students of color 43%

Average class size 15-16

Religious affiliation open to all faiths

Seniors with National Merit recognition 10%

Grade foreign language first offered pre-K3

Language(s) offered French, German, Latin, Spanish

Lowest tuition for 5-day students \$14,820

Annual tuition for highest grade \$27,170

Students receiving financial aid 19%

Class size expands in pre-K3, K, 1, 6, 9

Uniform no

Bus transportation yes (20+ routes)

Teacher retention rate 79%

AP courses offered 26

Students scoring 3+ on AP exams 73%

Varsity sports baseball, basketball, cheerleading, cross-country, football, golf, lacrosse,

soccer, softball, swimming/diving, tennis, track & field, volleyball, wrestling

Division GHSA class AA

STEM/STEAM program yes, across all grades, including 5 robotics/technology labs

Art studios 5

Theater productions per year 7

Musical ensembles 9

Annual applications per opening data N/A

What's new The Walker School ushers in the 2022-2023 school year with a new Head of School, Carl C. Carlson, who comes to the school with a distinguished 30-year career as an educator. For the past eight years, he worked at Tampa Preparatory School as its Head of High School. Prior to his tenure in Florida, he spent 23 years in traditional New England boarding schools. Carlson attended Wesleyan University and holds a master's degree in education from Harvard University. He brings extensive and versatile experience and considers independent school education his life's work, personal purpose, and an extension of his core values.

THE WEBER SCHOOL/FELICIA PENZELL WEBER JEWISH COMMUNITY HIGH SCHOOL

6751 Roswell Road, Atlanta, 30328,

404-917-2500, weberschool.org

Grades offered 9-12

Total number of students 290

Accreditation GISA, NAIS, SAIS

Founded 1997

Students of color 1%

Average class size 10

Religious affiliation Jewish (pluralistic)

Seniors with National Merit recognition data N/A

Grade foreign language first offered 9

Language(s) offered Hebrew, Spanish

Annual tuition \$31,900

Students receiving financial aid 48%

Uniform no

Bus transportation no

Teacher retention rate data N/A

AP courses offered 21

Students scoring 3+ on AP exams data N/A

Varsity sports baseball, basketball, cross-country, golf, gymnastics, soccer, softball, swimming/diving, tennis, track & field, volleyball, wrestling

Division GHSA class AAA

STEM/STEAM program yes

Art studios 2

Theater productions per year 2

Musical ensembles 2

Annual applications per opening data N/A

What's new The addition of new interdisciplinary courses across programs gives students the opportunity to think beyond traditional disciplinary boundaries and paradigms while exploring content and ideas at a sophisticated, multi-perspective level. We are proud to offer the academically prestigious AP Capstone program to students, which develops students' skills in



WHAT IS POSSIBLE?

FIND THE ANSWERS AT EPSTEIN.

Here, the classroom experience includes leading technology and resources within an inclusive learning environment devoted to academic excellence, anchored in Jewish values.

CHALLENGING MINDS. NURTURING HEARTS. MAKING MENSCHES.



(404) 250-5600 | EpsteinAtlanta.org



HOLY SPIRIT
PREPARATORY SCHOOL

Providing an authentic Catholic, Classical, and Complete education to prepare students 6 months old through the 12th grade for college, life, and Eternity

Schedule a tour today!
holyspiritprep.org

ATLANTA INDEPENDENT SCHOOL GUIDE

research, analysis, evidence-based arguments, collaboration, writing, and presenting. This year, Weber turned the standard high school science sequence on its head by launching its Physics First curriculum, introducing physics to students in the ninth grade. In anticipation of our new music and performing arts center breaking ground this spring, there are exciting developments in our music and theatre programming; Weber's Performing Arts Program launched its Visiting Artist Series, bringing local and national artists to the Weber community for master classes, events, and performances. Weber's Office of Student Support & Enrichment and Student Programming and Leadership brings new Social Emotional Learning (SEL) Student Programming to our students through its Weber Wellness Series, an initiative designed to bring positive, growth-minded experiences to students throughout the school year.

WESLEYAN SCHOOL

5405 Spalding Drive, Peachtree Corners,
30092, 770-448-7640, wesleyschool.org

Grades offered K-12

Total number of students 1,207

Number of high school students 494

Accreditation CESA, Cognia, SAIS

Founded 1963

Students of color 24.7%

Average class size 19 (K-5), 16 (middle), 13 (high)

Religious affiliation Christian

Seniors with National Merit recognition 8

Grade foreign language first offered K

Language(s) offered French, Latin, Spanish

Lowest tuition for 5-day students \$19,560

Annual tuition for highest grade \$27,930

Students receiving financial aid 12%

Class size expands in K, 1, 5, 6, 7, 9

Uniform yes

Bus transportation yes

Teacher retention rate 91%

AP courses offered 25

Students scoring 3+ on AP exams 89%

Varsity sports baseball, basketball, cheerleading, cross-country, football, golf, lacrosse, soccer, softball, swimming/diving, tennis, track & field, volleyball, wrestling

Division GHSA class AAA

STEM/STEAM program yes

Art studios 5

Theater productions per year 11 (6 lower school, 2 middle school, 3 high school)

Musical ensembles 3

Annual applications per opening 3

WESTMINSTER

1424 West Paces Ferry Road, Atlanta, 30327,
404-355-8673, westminster.net

Grades offered K-12

Total number of students 1,880

Number of high school students 823

Accreditation AAAIS, NAIS, SAIS

Founded 1951

Students of color 40%

Average class size 18 (K-5; 2 teachers per class), 15 (middle), 16 (high)

Religious affiliation Christian

Seniors with National Merit recognition 30%

Grade foreign language first offered K

Language(s) offered Chinese, French, Latin, Spanish

Lowest tuition for 5-day students \$29,746

Annual tuition for highest grade \$34,106

Students receiving financial aid 13%

Class size expands in 1, 5, 6, 7, 9

Uniform no

Bus transportation no

Teacher retention rate 90%

AP courses offered 24

Students scoring 3+ on AP exams 82%

Varsity sports baseball, basketball, cheerleading, cross-country, football, golf, gymnastics, lacrosse, rowing, soccer, softball, squash, swimming/diving, tennis, track & field, volleyball, wrestling

Division GHSA class AAAA

STEM/STEAM program yes

Art studios 9

Theater productions per year 6

Musical ensembles 10

Annual applications per opening 4

WHITEFIELD ACADEMY

1 Whitefield Drive, Smyrna, 30126,



MJCCA Preschools

Building a love of learning, and friendships for life.


REGISTRATION FOR 2023-24 OPENS JANUARY 8

FULL & HALF-DAY OPTIONS | AGES 6 WEEKS - KINDERGARTEN
Dunwoody | East Cobb | Sandy Springs

ATLANTA JCC.ORG/PRESCHOOL
PRESCHOOL@ATLANTA JCC.ORG
678.812.3834

MJCCA

Jewish Federation of Greater Atlanta




THE PAIDEIA SCHOOL

An immersive education that prepares students to live intellectually curious lives.
From ages 3 to grade 12

Application deadlines:

Half Day (Ages 3-5)	Regular Application (Full Day K - High School)
January 9	February 1

We invite you to visit or call:
www.paideiaschool.org 404-270-2312
An independent school located in the Druid Hills neighborhood of Atlanta.



678-305-3000, whitefieldacademy.com

Grades offered pre-K-12

Total number of students 931

Number of high school students 311

Accreditation AAAS, SAIS

Founded 1997

Students of color 29%

Average class size 16-20

Religious affiliation nondenominational
Christian

Seniors with National Merit recognition 6%

Grade foreign language first offered pre-K

Language(s) offered French, Latin, Spanish

Lowest tuition for 5-day students \$12,800
(pre-K)

Annual tuition for highest grade \$27,900
(6-12)

Students receiving financial aid 21%

Class size expands in K, 5, 6, 9

Uniform yes

Bus transportation yes (Buckhead area)

Teacher retention rate 86%

AP courses offered 19

Students scoring 3+ on AP exams 86%

Varsity sports baseball, basketball, cheer-
leading, cross-country, football, golf, lacrosse,
soccer, softball, swimming/diving, tennis, track
& field, volleyball, wrestling

Division GHSA class A

STEM/STEAM program yes

art studios 4

Theater productions per year 5

Musical ensembles 11

Annual applications per opening varies

What's new We've incorporated Executive
Functioning Coaching into our 5th and 6th
grade curriculum.

WOODWARD ACADEMY

Main campus: 1662 Rugby Avenue, College
Park, 30337, 404-765-4001; **north campus**
(pre-K-6): 6565 Boles Road, Johns Creek,
30097, 404-765-4490; woodward.edu

Grades offered pre-K-12

Total number of students 2,568

Number of high school students 1,068

Accreditation GISA, NAIS, SACS, SAIS

Founded 1900

Students of color 58%

Average class size 14

Religious affiliation none

Seniors with National Merit recognition 8.7%

Grade foreign language first offered pre-K

Language(s) offered Chinese, French, German,
Japanese, Spanish

Lowest tuition for 5-day students \$19,800

Annual tuition for highest grade \$31,150

Students receiving financial aid 20%

Uniform yes

Bus transportation yes

Teacher retention rate 90%

AP courses offered 25

Students scoring 3+ on AP exams 82%

Varsity sports baseball, basketball, cheer-
leading, clay target, cross-country, Esports,

football, golf, lacrosse, riflery, soccer, softball,
swimming/diving, tennis, track & field, Ultimate,
volleyball, wrestling

Division GHSA class AAAAA

STEM/STEAM program yes

Art studios 12

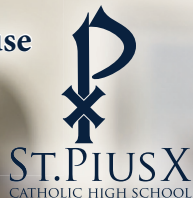
Theater productions per year 7

Musical ensembles 30

Annual applications per opening data N/A

What's new Dr. Nigel A. T aylor began
his role as Vice President for Academic
& Student Life in July 2022. An Atlanta
native, Dr. T aylor has extensive independent
school experience across three institutions—
Lakeview Academy, Bishop McNamara, and
Holy Innocents' Episcopal School. An
ongoing expansion of Richardson Hall will
facilitate a number of exciting upgrades to
the Upper School's visual and performing
arts programs, with full completion
scheduled for spring 2023. Woodward
Academy dedicated the Stephen A. Belin '72
History Center in April 2022. The center tells
the Woodward story through a permanent
timeline and rotating exhibitions and
provides a climate-controlled home for the
archives of the school, which opened in 1900
as Georgia Military Academy.

Please join us for Open House
Sunday, November 6, 2022
1 - 4 p.m.



Christ-Centered
Environment
Certified Teachers
17.5 years average
experience

Academic Rigor
Class of 2022 earned
over \$23 million in
academic scholarships

27 AP Courses Offered

100% Graduation Rate
Class of 2022
matriculated to 84 schools

For more information, please visit www.spx.org today!

WESLEYAN SCHOOL

Where authentic
Christian mission
and academic
excellence aren't
mutually exclusive



WHY WESLEYAN?
Scan to learn more!

EXPLORE WESLEYAN AT
WWW.WESLEYANSCHOOL.ORG/ADMISSIONS

MORE THAN \$25.3 BILLION

TO EDUCATION SINCE INCEPTION



galottery.com

Every time you play the Lottery, you're helping our students get one step closer to their dreams. Over 28 years, the Georgia Lottery has contributed more than \$25.3 billion to education. More than 2 million HOPE scholars have gone to college, and more than 1.7 million four-year-olds have attended a Lottery-funded Pre-K program. That's a lot of students. Thank you, Georgia!

EVERYONE DREAMS WE MAKE IT REAL



Savannah Maddox Seay ('20)
Teacher (K-12)

We're teaching a new generation to Lead Change. At Troy University, we offer leadership opportunities from day one. Choose from more than 170 majors and minors or build your own program to make your dreams real. Be part of a family of leaders with more than 173,000 alumni worldwide. Now is your time to learn to lead.

Plan a campus tour. Ask about Fall 2023 scholarships.
Our Admissions team is here to answer all of your questions!

troy.edu/learntolead | 1-800-586-9771

TROY
UNIVERSITY™

LEADCHANGE

SPECIAL ADVERTISING SECTION

2022

GEORGIA

COLLEGE

GUIDE

ILLUSTRATIONS BY SÉBASTIEN THIBAUT



APPLY YOURSELF

What you need to know about applying to college in Georgia today

BY H.M. CAULEY

Applying to college is a major milestone that takes time and a great deal of effort. There are many moving parts associated with the undertaking, and changes made by college and university systems across the state can affect the process. Here are three key elements that might alter how and when you begin applying to your preferred institutes of higher education.

Submitting the Application

Covid-19 has impacted almost every aspect of life, including applying to college. The move to online submissions, as well as logistical problems around testing during the pandemic, changed how the process traditionally worked, says Taran Smith, a counselor at Etowah High School in Cherokee County.

"It's become a lot easier with online

applications, simple questions, and one hub to send an application to multiple schools," she says. "The same [applies to] FAFSA (Free Application for Federal Student Aid); it's quicker and more accessible, and you can fill it out on a phone."

Considering Test Scores

The University System of Georgia recently made SAT and ACT scores optional for all but the Georgia Institute of Technology and the University of Georgia. But that might shift, says Joanna Key, a college and career specialist at Gwinnett's Lanier High School.

"The college admissions landscape changes daily," she says. "So it's important to check, especially with out-of-state schools, to see what they require."



The college admissions landscape changes daily

JOANNA KEY

In lieu of test scores, admissions officers are putting more emphasis on coursework. Key continues, "They look at the rigor of the courses—AP (advanced placement), honors, dual enrollment. They look at involvement in extracurriculars, clubs, community service, volunteerism, and what makes a student stand out. Are they a leader? Are they working and maintaining good grades? They look at the whole picture of what a student may bring to the institution."

Managing Deadlines

These days, counselors are seeing earlier application deadlines. Smith recommends applying in October or November and opting for early decision or early action. That way, students will have acceptances before the holiday break and can begin applying for scholarships and financial aid as early as November.

"That's different from a few decades ago when you did it in March," she says. "Now students are picking their housing in January."

Smith also recommends starting the whole college conversation much earlier than high school. "By fifth grade, students have decided if they're college bound," she says. "They can think about and plan for careers and majors. By seventh and eighth grades, a college-bound student can maximize the rigor that will help them get into competitive schools."

Additionally, thinking about college sooner rather than later can pay off financially. Smith concludes, "I urge students to choose their schools with purpose. Have a couple of majors to consider because, if you have no end goal, it can get very expensive."

MONEY MATTERS

clever ways to pay for your college education

BY H.M. CAULEY

Paying for college has become as serious a commitment as buying a home. Students may face years of debt, and parents may raid retirement savings to afford soaring costs. But options are out there.

1

Use HOPE for private schools.

While the scholarship contributes 70 to 85% towards tuition costs at University System of Georgia schools, it offers approximately \$3,600 for tuition at the state's private institutions as well.

2

Get in-state tuition at an out-of-state school.

"If your major is not offered in Georgia but another state's school has it, they may accept you with in-state tuition," says Lanier High School college and career specialist Joanna Key. Check out the Academic Common Market, a tuition-savings program from the Southern Regional Education Board, for details.

3

Review your employer's benefits.

Parents' employers and companies that hire high school students may offer scholarships.

4

Apply for institutional scholarships sooner rather than later.

Most private colleges have endowment money for financial aid, but paying attention to criteria and deadlines is important. "And don't think you make too much money for financial aid," says Stuart Canzeri, founder of Peachtree College Planning. "You might be surprised."

5

Look to metro area school districts, which may have foundations that offer scholarships.

According to Key, it's a great option because "you're only competing against people in your district. We even have some here just for Lanier students."

6

Consider a field that could allow for public service forgiveness.

"It's important to structure the right kinds of loans," says Canzeri. "But a lot of times, forgiveness can cut the cost of repayment."

7

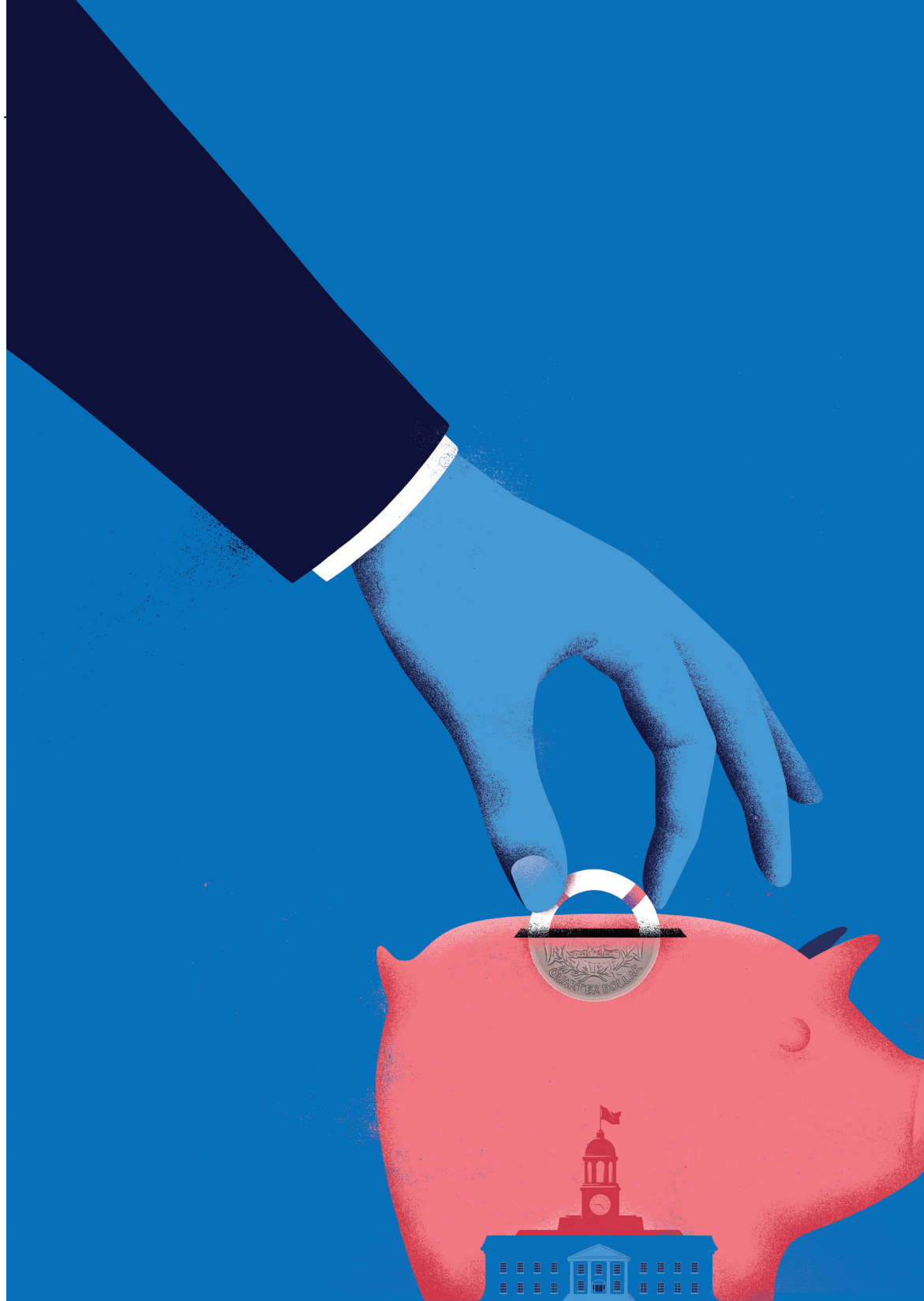
Get a jump on required courses.

Consider dual enrollment as a high school senior or take core classes at two-year schools where costs are usually lower.

8

Negotiate.

"Most people don't realize that colleges will discount, and they rule out schools based on sticker prices," Canzeri says. "But you can negotiate. And once you're in college, make the dorm's resident advisor your best friend and learn how it's done. Being an RA for your sophomore, junior, and senior years is a big way to cut room and board costs."



2022

Directory of Georgia Colleges



NOTES ON LISTINGS

The Georgia College Guide directory includes all schools that have campuses in state, offer four-year undergraduate programs, and are accredited by the Southern Association of Colleges and Schools (SACS) or, for satellite campuses, regional equivalents in the Council for Higher Education Accreditation.

Tuition figures are undergraduate and do not include fees or room and board unless otherwise noted. Graduate tuition figures also are provided when available.

HOPE figures are consolidated, including standard HOPE and Zell Miller Scholarships (unless noted). Schools supplied both SAT and ACT scores when available. Many schools still use only math and critical reading SAT scores for admissions. When available and used by the school, we have noted the composite three-part score for math, reading, and writing. The ACT score breakdown typically includes English and math. In some cases, schools no longer require SAT or ACT scores for admission, particularly during the Covid-19 pandemic; this is noted when applicable.

***The information for each school with an asterisk comes from the institution's website, as the college or university did not respond to requests for data prior to publication.**

n/a = not applicable
NA = data not available

ABRAHAM BALDWIN AGRICULTURAL COLLEGE

2802 Moore Highway, Tifton, 31793,
229-391-5000, abac.edu

Since 1908, Abraham Baldwin Agricultural College has provided unique, hands-on learning opportunities for students as the South's premier destination for agricultural studies. Its offerings have grown a great deal since its founding and now include a wide range of more traditional four-year degrees and paths to success, including a highly sought-after nursing program, innovative arts and science tracks, and an ever-growing list of learning opportunities and majors for students.

Founded 1908

Undergraduate enrollment 3,648

Public

In-state tuition \$2,103/semester (15 credit hours)

Out-of-state tuition \$6,419/semester (15 credit hours)

Georgia freshmen on HOPE 75%

Average composite three-part SAT score for entering freshmen n/a (the school only considers reading and math scores)

Average critical reading and math composite SAT score 997

SAT score breakdown 511, critical reading; 485, math; NA, writing

Average ACT score for entering freshmen 18

ACT score breakdown 18, English; 18, math

Average class size for freshman courses 19:1 student-teacher ratio

Popular majors agriculture, agribusiness, agricultural education, biology, business, natural resource management, nursing

AGNES SCOTT COLLEGE

141 East College Avenue, Decatur, 30030,
404-471-6285, agnesscott.edu

Agnes Scott College is a national liberal arts college for women, which has been ranked the No. 1 most innovative liberal arts institution for five consecutive years by U.S. News & World Report. It is known for SUMMIT, an innovative and personalized approach to the liberal arts and sciences that focuses on leadership development, global learning, and professional success.

Founded 1889

Undergraduate enrollment 1,016

Private

Tuition \$45,456/year

Georgia freshmen on HOPE 66%

In-state students on HOPE 55%

In-state students on Zell Miller Scholarship 21%

Average total SAT score 1253 (evidence-based reasoning and writing and math)

Average composite SAT score 1140-1340 (middle 50th percentiles)

Average ACT score for entering freshmen 28

Act composite score 24-31 (middle 50th percentiles)

Average class size for freshman courses 21

Popular majors public health, psychology, English, neuroscience

ALBANY STATE UNIVERSITY

504 College Drive, Albany, 31705,
229-430-4600, asurams.edu

Albany State University, a public institution in the University System of Georgia, fosters the growth and development of southwest Georgia and the state through teaching/learning, research, creative expression, and public service. The university offers more than 60 programs, including certificates, associate, bachelor's, and graduate degrees, including a specialist degree.

Founded 1903

Undergraduate enrollment 5,850

Graduate enrollment 474

Public

In-state tuition and fees \$3,475/semester (bachelor's)

Out-of-state tuition and fees \$10,176/semester (bachelor's)

Popular majors nursing, business administration, health and human performance, criminal justice, biology, management, psychology, education, forensic science, computer science, physical therapy assistant, dental hygiene

*AMERICAN INTERCONTINENTAL UNIVERSITY

6600 Peachtree Dunwoody Road;
500 Embassy Row, Atlanta, 30328,
404-965-6500, aiuniv.edu/atlanta

Founded in Europe in 1970, American InterContinental University offers a wide range of undergraduate and graduate degrees. The main campus is located in Chicago; additional campuses are located in Atlanta and Houston, Texas. The AIU Atlanta campus, located just north of downtown, offers dedicated local instructors who are experts in their respective fields. The location's academic offerings cover a range of undergraduate options, from business administration, healthcare management, and criminal justice to information technology and media production, as well as 10 master's degree programs.

*THE ART INSTITUTE OF ATLANTA

6600 Peachtree Dunwoody Road;
100 Embassy Row, Atlanta, 30328,
770-394-8300/800-275-4242,
artinstitutes.edu/atlanta

Founded in 1949 as Massey Business College, the college became the Art Institute of Atlanta in 1975 and is now one of the Art Institutes, a system of more than 50 schools throughout North America. The private college features creative professional studies that prepare students for careers in design, media, and the culinary arts. The academic programs, which cover everything from advertising and fashion design to graphic design and animation, are formulated with industry

input and ensure that students are introduced to a career-oriented curriculum that addresses the multifaceted needs of an emerging global market.

*ATLANTA METROPOLITAN STATE COLLEGE

1630 Metropolitan Parkway SW, Atlanta, 30310, 404-756-4000, atlm.edu

Atlanta Metropolitan State College (AMSC), a unit of the University System of Georgia, is a four-year liberal arts institution offering bachelor's degrees, associate's degrees, and certificates. The college accommodates a diverse student body, with 40 percent of its student population being age 25 and older. AMSC boasts three academic schools: the School of Business & Information Technology, the School of Science & Health Professionals, and the School of Social Sciences & Humanities. Programs offered are designed to be flexible enough for the adult learner, as well as the traditional student, with on-campus, online, day, and evening classes available.

*AUGUSTA UNIVERSITY

1120 15th Street, Augusta, 30912, 706-721-0211, augusta.edu

Augusta University, formerly Georgia Regents University and home of the Medical College of Georgia, is one of only four public research institutions in Georgia; there are more than 1,100 full-time faculty members. It houses the nation's 13th-oldest medical school, the state's sole dental college, a growing intercollegiate athletics program, the Hull College of Business, and more. With over 650 acres and nearly 150 buildings, the university is a \$1.3 billion enterprise.

BERRY COLLEGE

2277 Martha Berry Highway NW, Mount Berry, 30149, 706-232-5374/800-BERRY-GA, berry.edu

Nationally recognized for academic excellence and as an outstanding educational value, Berry is an independent, comprehensive liberal arts college of approximately 2,200 students. The college offers an exceptional education that balances closely mentored intellectual exploration, practical learning, and character development. Its 27,000-acre campus, the world's largest, provides unmatched resources for its students' professional development.

Founded 1902

Undergraduate enrollment 2,250

Graduate enrollment 117

Private

Tuition \$39,150 (tuition and fees are \$39,376)

Georgia freshmen on HOPE 94%

Average composite three-part SAT score for entering freshmen n/a; Berry College no longer requires SAT and ACT scores for admission, but they are considered if provided
Average critical reading and math composite SAT score n/a

SAT score breakdown n/a, critical reading; n/a, math; n/a writing

Average ACT score for entering freshmen n/a

ACT score breakdown n/a, English; n/a, math; n/a, writing

Average class size for freshman courses 19

Popular majors animal science, biology, psychology, exercise science, communication, dual-degree engineering, biochemistry, nursing, management, creative technologies

BRENAU UNIVERSITY

500 Washington Street SE, Gainesville, 30501, 770-534-6162/800-252-5119, brenau.edu

Brenau University is a private, not-for-profit, comprehensive institution of higher education that enrolls students in graduate and undergraduate studies on campuses and online. Gainesville, Georgia-based Brenau includes the residential Women's College, which represents the academic and philosophical underpinnings of the liberal arts university. Brenau also provides co-education-

al opportunities through the doctoral level, including on-ground programs in Gainesville and Norcross.

Founded 1878

Undergraduate enrollment 1,590

Graduate enrollment 1,240

Private

Tuition Women's College and undergraduate school co-educational daytime programs, \$30,000/year; undergraduate (nursing) or Women's College (health sciences), \$30,750/year; graduate, \$656-\$742/hour; military, \$250/hour

Georgia freshmen on HOPE 49%

Average critical reading and math composite SAT score 1057

SAT score breakdown 552, evidence-based reading/writing; 505, math

Average ACT score for entering freshmen 20 (test is optional; applicants who choose to submit test scores may submit either SAT or ACT)

Average class size for freshman courses 15

Popular majors undergraduate: nursing, elementary education, health science-pre nursing, special student, liberal studies, psychology, elementary education, general business, biology, English; graduate: occupational therapy, physical therapy, organizational leadership, family nurse practitioner, clinical counseling psychology, MBA, elementary education, human resources, management, applied gerontology

BREWTON-PARKER COLLEGE

201 David-Eliza Fountain Circle, P.O. Box 197, Mount Vernon, 30445,

912-583-2241/800-342-1087, bpc.edu

Brewton-Parker College is the only accredited four-year Christian college south of Macon and north of Jacksonville, Florida. As a comprehensive Georgia Baptist institution, Brewton-Parker College provides liberal arts and professional programs in a learning community of shared Christian values.

Through the application of biblical truth in scholarship and a co-curricular focus on character, servant leadership, and cultural engagement, the college strives to provide a transformational experience that equips the whole student for lifelong learning and service in Christ. The college currently offers 29 programs of study both on campus and via distance education and has 18 intercollegiate athletic teams. It is ranked ninth in the nation for campus ethnic diversity among the South's regional colleges by U.S. News & World Report and in the top 25% of Southern regional colleges in economic diversity.

Founded 1904

Undergraduate enrollment 876

Private

Tuition \$17,850/year

Average GPA of entering freshmen

Average SAT and ACT scores Due to the Covid-19 pandemic, BPC has test-optional admissions procedures as outlined on the admissions website

Average class size for freshman courses 23

Popular majors nursing, business, Christian studies, education, psychology



COLLEGE GUIDE

***CLARK ATLANTA UNIVERSITY**

223 James P. Brawley Drive, Atlanta, 30314,
404-880-8000, cau.edu

Formed in 1988 when Atlanta University merged with Clark College, Clark Atlanta University is one of the area's most prestigious Historically Black Colleges and Universities (HBCU). The private, not-for-profit institution is known for its impressive undergraduate and graduate programs, its NCAA Division II sports teams, and its commitment to educating the next generation of African American leaders through global innovation, transformative educational experiences, and high-value engagement. The school, which boasts a vibrant main campus in downtown Atlanta, offers more than 40 degree programs across an array of disciplines, including business, education, arts and sciences, and more.

***CLAYTON STATE UNIVERSITY**

2000 Clayton State Boulevard, Morrow, 30260,
678-466-4000, clayton.edu

The *Atlanta Business Chronicle* named Clayton State 12th among Atlanta's 25 largest colleges and universities for 2016. The 214-acre campus offers a unique rural setting in the metro Atlanta area and is home to Spivey Hall, an acclaimed concert venue. The school's mission is to empower students through rich experiences and offer outstanding programs that reflect 21st-century business and industry. Clayton State is home to four colleges, 35 undergraduate degree programs, eight graduate degree programs, and six associate's degree programs.

COLLEGE OF COASTAL GEORGIA

1 College Drive, Brunswick, 31520,
912-279-5700, ccga.edu

Located on the Southeast Atlantic coast in Brunswick, midway between Savannah and Jacksonville, Florida, the College of Coastal

Georgia is an undergraduate college in the University System of Georgia. The college provides an affordable and interactive education in the natural beauty and abundant sunshine of Georgia's Golden Isles, an area noted for world-class golf courses and resorts, as well as an amazing diversity of maritime habitats, wildlife, and sea creatures.

Founded 1961

Undergraduate enrollment 3,249

Public

In-state tuition \$106.80/credit hour

Out-of-state tuition \$394.53/credit hour

Georgia freshmen on HOPE 46%

Average composite three-part SAT score for entering freshmen n/a

Average critical reading and math composite

SAT score n/a (test scores not required)

SAT score breakdown n/a (test scores not required)

SAT score breakdown n/a (test scores not required)

Average ACT score for entering freshmen n/a (test scores not required)

ACT score breakdown n/a (test scores not required)

Average class size for freshman courses 23

Popular majors baccalaureate: American studies, biological sciences, business administration, criminal justice, data science, early childhood/special education, environmental science, French language and literature, health informatics, health sciences, hospitality and tourism management, mathematics, middle grades education, public management nursing, nursing (RN to BSN), Spanish language and literature, and workforce management and leadership; career associate: culinary arts, nursing and radiologic science; associate: arts, science

COLUMBUS STATE UNIVERSITY

4225 University Avenue, Columbus, 31907,
706-507-8800/866-264-2035,
columbusstate.edu

Columbus State University fosters creativity to change lives by helping its undergraduate and graduate students build their creative muscles to see things in new ways, collaborate across disciplines, and discover unexpected solutions. Students from Georgia, the Southeast, and 40-plus countries study in more than 90 degree, certificate, and nexus programs that lead to careers in the arts, business, technology, sciences, education, or health professions. In addition to being consistently ranked as a top regional university in the South and as a military-friendly institution, it offers an active campus life marked by 100-plus student organizations, 13 NCAA Division II sports teams, and tailor-made experiences in its honors college, servant leadership program, and global engagement and study abroad opportunities.

Founded 1958

Undergraduate enrollment 6,427

Graduate enrollment 1,498

Public

In-state tuition \$2,186/semester (12 credit hours)

Out-of-state tuition \$7,713/semester (12 credit hours); eligible students residing in Georgia's

border states qualify for in-state tuition

Georgia freshmen on HOPE 51%

Average SAT score midranges* (25th to 75th percentiles); evidence-based reading and writing: 440–570; math: 430–560. (*test scores were not required in fall 2021, so these midranges represent ~10% of the new first-time students)

Average ACT score midranges* (25th to 75th percentiles); English: 17–24; math: 16–23 (*test scores were not required in fall 2021, so these midranges represent ~10% of the new first-time students)

Average class size for freshman courses 17

New and popular majors Columbus State's signature academic programs span the arts and humanities (including CSU's growing film production and integrated media programs); business (including traditional degrees and nexus offerings in cybersecurity); education (qualified teacher education graduates are guaranteed a teaching contract with the Muscogee County School District); health professions (including nursing, as well as competitive pre-medical studies with an average 84% acceptance rate into top-choice medical schools); social sciences; STEM (robotic engineering majors can earn a five-year accelerated bachelor's/master's combination degree) competitive pre-medical studies with an average 84% acceptance rate into top-choice medical schools); social sciences; stem (robotic engineering majors can earn a five-year accelerated bachelor's/master's combination degree)

COVENANT COLLEGE

14049 Scenic Highway, Lookout Mountain,
30750, 706-820-1560/888-451-2683,
covenant.edu

Recognized as a top-tier national liberal arts college by U.S. News & World Report, Covenant equips students with the skills necessary to succeed in their career and beyond. From work to family to church involvement to community service, our graduates thrive and live in a Christ-like manner. The college is located on beautiful Lookout Mountain in Georgia, just 15 minutes from thriving downtown Chattanooga, Tennessee.

Founded 1955

Undergraduate enrollment 872

Graduate enrollment 46

Private

Tuition \$36,700/year

Georgia freshmen on HOPE 19% (8% on Zell Miller Scholarship)

Average composite three-part SAT score for entering freshmen n/a (the three-part SAT is not used anymore)

Average critical reading and math composite

SAT score 1055–1310 (25th to 75th percentiles)

SAT score breakdown 540–670, evidence-based reading and writing; 520–635,

math (25th to 75th percentiles); does not currently use writing score in admissions

Average ACT score for entering freshmen

22–29 (25th to 75th percentiles)

ACT score breakdown 22–33, English; 20–27

math; 23–32 reading; 23–27 science

Average class size for freshman courses 16



COMPARISONS FAIL. THERE'S ONLY ONE BERRY.



**STUDENT-FACULTY
INTERACTION
RANKED IN TOP
10% NATIONALLY**
NATIONAL SURVEY OF STUDENT
ENGAGEMENT



**REGULARLY RANKED
AMONG THE MOST
BEAUTIFUL COLLEGES
IN AMERICA**

**1,000+
PROFESSIONAL
DEVELOPMENT
OPPORTUNITIES
THROUGH THE
LIFEWORX
PROGRAM**



BERRY
COLLEGE

berry.edu

COLLEGE GUIDE

Average class size (11:1 student-faculty ratio)

Popular majors education, psychology, business, English, biology, biblical studies, theological studies

DALTON STATE COLLEGE

650 College Drive, Dalton, 30720,
706-272-4436/800-829-4436,
daltonstate.edu

Dalton State College delivers a transformational education experience in a diverse, caring community to approximately 4,500 students. An institution of the University System of Georgia, Dalton State provides broad access to high-quality bachelor's degrees, associate's degrees, and career certificate programs. Dalton State is Georgia's first and only Hispanic-Serving Institution, a federal designation given to schools where at least 25% of the student population identifies as Hispanic, and attracts students from 39 countries worldwide.

Founded 1963

Undergraduate enrollment 4,535

Public

In-state tuition & fees \$1,962/semester (15 credit hours)

Out-of-state tuition & fees \$6,278/semester (15 credit hours)

Georgia freshmen on HOPE 67%

Average composite three-part SAT score for entering freshmen n/a

Average critical reading and math composite SAT score n/a

SAT score breakdown n/a

Average ACT score for entering freshmen n/a

Average class size 15

Popular majors elementary education, biology, management, nursing, criminal justice

DEVRY UNIVERSITY

1 West Court Square, Suite 600, Decatur,
30030 (There are four Atlanta-area
locations), 404-270-2706, devry.edu

DeVry University strives to close society's opportunity gap by preparing learners to thrive in careers shaped by continuous technological change. DeVry offers career-focused degree programs and certificates taught by dedicated faculty. It offers 31 undergraduate programs, including undergraduate certificates, associate's degrees, and bachelor's degrees. (Program availability varies by location.) DeVry also offers nine master's degree programs and nine stackable graduate certificates, including an MBA with 10 specializations, and specialized degrees and certificates in fields such as accounting, project management, and information technology.

Founded 1931

Georgia enrollment total 993; undergraduate 927; graduate 66 (fall 2021)

Private

Tuition undergraduate: \$514/credit hour, \$250/credit hour active-duty military tuition rate, corporate and government partner tuition savings options for those who qualify; graduate: \$776/credit hour, \$575/credit hour active-duty military tuition rate, corporate and government partners and alumni tuition

savings options for those who qualify.

Average composite three-part SAT score for entering freshmen n/a (SAT not required for admission)

Average ACT score for entering freshmen n/a

Average class size for freshman courses n/a

Popular majors business administration, technical management, management, information technology and networking, computer information systems, health information management

***EAST GEORGIA STATE COLLEGE**

131 College Circle, Swainsboro, 30401,
478-289-2169, ega.edu

East Georgia State College (EGSC) is a four-year liberal arts institution of the University System of Georgia, providing a point of access to both academically transferable programs of study through an Associate of Arts degree and collaborative programs in occupation-related fields. Online degrees and targeted baccalaureate degrees are also available. EGSC has the lowest tuition of any college in the University System of Georgia and serves students at three locations: Statesboro, Augusta, and the main campus in Swainsboro (which also has on-campus apartments).

EMMANUEL COLLEGE

181 Spring Street, Franklin Springs, 30639,
800-860-8800, ec.edu

A Christian college with a liberal arts focus, Emmanuel has more than 34 majors at the undergraduate level and two new graduate programs, a Master of Elementary Education and Master of Education Science.

Founded 1919

Undergraduate enrollment 850

Private

Tuition \$22,424 (undergraduate)

Georgia freshmen on HOPE 39.8%

Average composite three-part SAT score for entering freshmen n/a

Average critical reading and math composite SAT score 1025

SAT score breakdown n/a; does not currently use writing score in admissions

Average class size for freshman courses 20-25

Popular majors biology, early childhood education, kinesiology, psychology

EMORY UNIVERSITY

201 Dowman Drive, Atlanta, 30322,
404-727-6123, emory.edu

Emory University is one of the world's leading research universities. Emory is recognized internationally for its outstanding liberal arts colleges, highly ranked graduate and professional schools, and one of the world's leading healthcare systems. Students can choose to begin at Emory College of Arts and Sciences in Atlanta or Oxford College, located 38 miles east of the city. Both offer a rigorous academic experience guided by excellent faculty and grounded in the liberal arts traditions of inquiry, interdisciplinary study, and evidence-based learning. Emory offers more than 80 majors and 60 minors and encompasses nine academic divisions, as well as the Carter Center, the Emory National Primate Research Center, the Michael C. Carlos Museum, and Emory Healthcare. Emory's average freshman retention rate, an indicator of student satisfaction, is 94%.

Founded 1836

Undergraduate enrollment 7,130 (fall 2021)

Graduate enrollment 7,651 (fall 2021)

Private

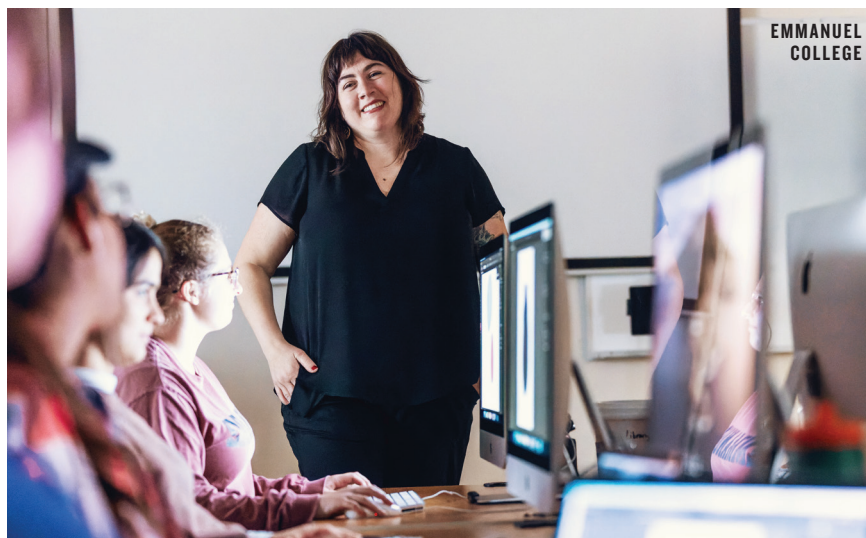
Tuition \$57,948 (tuition and fees)

GPA (unweighted) 3.81

NOTE: Emory University is test-optional for the 2020 and 2021 admission cycle. Not all applicants choose to submit test scores when applying. Testing statistics are taken from applicants who submitted test scores with their application.

Average SAT score 1430-1530 (25th and 75th percentiles)

SAT score breakdown 690-750, evidence-based reading and writing; 730-790, math (25th and 75th percentiles)





FIND YOUR SPIRIT



At Kennesaw State University, students celebrate what it means to be a KSU Owl — passionate, competitive, ambitious and dedicated. KSU provides a supportive and thriving campus community that bursts with school spirit and offers opportunities for growth and success. When you come to Kennesaw State, you don't just find your spirit, you find your wings™.

FIND.KENNESAW.EDU

COLLEGE GUIDE

average ACT score 33-34 (25th and 75th percentiles)

Average class size for freshman courses 9:1
Student-faculty ratio (Emory has 57% of its classes with fewer than 20 students)

Popular majors business administration and management, nursing, biology, neuroscience, psychology, econometrics and quantitative economics, chemistry, political science and government, sports, kinesiology, and physical education/fitness, computer science

FORT VALLEY STATE UNIVERSITY

1005 State University Drive, Fort Valley, 31030, 478-825-6211/877-462-3878, fvsu.edu

Fort Valley State University (FVSU) is a talent incubator for students who believe in their brilliance. Located in the heart of Georgia, FVSU combines the personal attention and family feel of a small, private college with the resources and research found at large public universities. Located on the second-largest acreage of any Georgia university, it is the only university in the world which at once is a University System of Georgia institution, a Historically Black University, and an 1890 land-grant institution, with a directive to use knowledge to improve the lives of students and non-students alike. Historically referred to as "the light in the valley," FVSU's legacy is built upon the belief that every human being is entitled to limitless learning and the benefits of knowledge. Leveraging the reputation for excellence FVSU has built since 1895, the university is preparing students to embrace their genius as future global leaders and enabling discovery which will make real that which is only now imagined. That's why our motto and tagline is "Empower the Possible."

Founded 1895

Undergraduate enrollment 2,618

Graduate enrollment 257

Public

In-state tuition \$3,204/semester (15 credit hours)

Out-of-state tuition \$9,241/semester

Georgia freshmen on HOPE n/a

Average composite three-part SAT score for entering freshmen n/a

Average critical reading and math composite SAT score 821; 410, average SAT math

SAT score breakdown 412, verbal; 480, critical reading; 409, math; does not currently use writing score in admissions

Average act score for entering freshmen

Students were not mandated to take the SAT or ACT

Average class size for freshman courses 30

Popular majors accounting, agricultural economics, animal science, biology, business management, criminal justice, early childhood education, general business, mass communications, middle grades education, psychology, veterinary technology; top five majors in fall 2022 were biology, criminal justice, psychology, management, veterinary technology

GEORGIA COLLEGE & STATE UNIVERSITY

231 West Hancock Street, Milledgeville, 31061, 478-445-5004/800-342-0471, gcsu.edu

The 43-acre campus of this fast-growing state school provides Greek life, an international student body, intramural sports, and more than 100 registered clubs and organizations.

Founded 1889

Undergraduate enrollment 5,586

Graduate enrollment 1,177

Public

In-state tuition \$18,694/year (including housing and meal plan; starting rate for eight-person suite with 10 meals/week; plans and costs vary)

Out-of-state tuition \$37,874 (including housing and meal plan; starting rate for eight-person suite with 10 meals/week; plans and costs vary)

Georgia freshmen on HOPE n/a

Average composite three-part SAT score for entering freshmen Georgia College utilizes only reading and math scores from the SAT

Average critical reading and math composite

SAT score 1161

SAT score breakdown 594 critical reading; 567, math

Average ACT score for entering freshmen

24.20, composite; Georgia College utilizes the English, math, and composite scores from the ACT

ACT score breakdown 24.26, English; 22.83, math

Popular majors art, athletic training, biology, business, chemistry, education, English, history, mass communications, math, nursing, physics, political science, psychology

GEORGIA GWINNETT COLLEGE

1000 University Center Lane, Lawrenceville, 30043, 678-407-5000, ggc.edu

Georgia Gwinnett College is the state's first new four-year public college in more than 100 years. Since opening in 2005, enrollment has grown from 118 to around 11,000. The college offers 21 majors with more than 40 areas of concentration, including Bachelor of Science degrees in business, nursing, information technology, biology, and political science.

Founded 2005

Undergraduate enrollment 10,949 (based on fall 2021 enrollment)

Public

In-state tuition \$133.93/credit hour, capped at \$2,009/semester for full-time students

Out-of-state tuition \$500/credit hour, capped at \$7,500/semester for full-time students

Georgia freshmen on HOPE 33.6%

Average composite three-part SAT score for entering freshmen 2195 (SAT is not required for admission; however, 14% of beginning freshmen choose to submit scores)

Average critical reading and math composite SAT score 1062

SAT score breakdown 517, critical reading; 530, math; 395, writing

Average ACT score for entering freshmen 20

ACT score breakdown 19, English; 20, math; 20, writing

Average class size for freshman courses 18

Popular majors business administration, nursing/pre-nursing, information technology, biology, psychology, cinema and media arts, criminal justice, exercise science, pre-education, mathematics

GEORGIA HIGHLANDS COLLEGE

3175 Cedartown Highway, Rome, 30161, 800-332-2406, highlands.edu

Georgia Highlands College is a multi-campus, state college member of the University System of Georgia. Founded in 1970 as Floyd Junior College, it now serves thousands of students in Northwest Georgia and Northeast Alabama across its four locations in Rome, Cartersville, Marietta, and Dallas. GHC currently offers over 40 areas of study with associate's degree and bachelor's degree options both in the classroom and online. GHC is proud to support the local economy with a regional economic impact of nearly \$175 million.

Founded 1970

Undergraduate enrollment 5,245

Public





IT'S IN YOU

Change minds.
Change beliefs.
Change systems.

Office of Admissions

1269 Barclay Circle | Marietta, GA

770-426-2884 | 800-543-3202

Admissions@life.edu

life.edu



LIFE[®]
University

COLLEGE GUIDE

In-state tuition \$1,425/semester (15 hours/semester)

Out-of-state tuition \$5,395/semester (15 hours/semester)

Georgia freshmen on HOPE 44%

Average composite three-part SAT score for entering freshmen n/a (SAT scores are not required for freshmen admission)

Average critical reading and math composite SAT score n/a

SAT score breakdown n/a

Average ACT score for entering freshmen n/a (ACT scores are not required for freshmen admission)

ACT score breakdown n/a

Average class size for freshman courses 18

Popular majors health professions, business administration, general studies, psychology, nursing (AS and BS), criminal justice (AS and BS), early childhood education, health science, biology, computer science

GEORGIA INSTITUTE OF TECHNOLOGY

Office of Admissions, Atlanta, 30332,
404-894-4154, gatech.edu

Georgia Tech, a perennial favorite among U.S. News & World Report's rankings of the top 10 public universities, is one of the oldest technical institutes in the U.S. The nationally recognized College of Engineering—also the country's largest and the top producer of female engineers—is known for industrial, aerospace, biomedical, and civil engineering and has been praised by *Diverse: Issues in Higher Education* as one of the nation's leading producers of African American engineering graduates.

Founded 1885

Undergraduate enrollment 18,509 (fall 2022)

Graduate enrollment 27,403 (fall 2022)

Public

In-state tuition \$12,852/year (fall 2021)

Out-of-state tuition \$33,694 (fall 2021)

Georgia freshmen on HOPE 99%

Average critical reading and math composite SAT score 1435 (fall 2021)

SAT score breakdown 703, critical reading; 732, math (fall 2021)

Average ACT score for entering freshmen 32 (fall 2021)

ACT score breakdown 32, English; 31 math (fall 2021)

Average class size for freshman courses 50

Popular majors mechanical engineering, computer science, analytics, industrial engineering, business administration, biomedical engineering, chemical and biomolecular engineering, aerospace engineering, electrical engineering, computer engineering, civil engineering

GEORGIA SOUTHERN UNIVERSITY

P.O. Box 8024, Statesboro, 30460,
912-478-4636, georgiasouthern.edu

Georgia Southern University is the state's largest and most comprehensive center of higher education south of Atlanta. With 142 degree programs at the bachelor's, master's and doctoral levels, Georgia Southern has been designated a Carnegie Doctoral/



Research university and serves more than 26,000 students from all 50 states, Washington D.C., and Puerto Rico, as well as 102 nations. With three vibrant campuses—the Armstrong Campus in Savannah, the Statesboro Campus, and the Liberty Campus in Hinesville—Georgia Southern offers an attractive campus environment that encourages learning, discovery, and personal growth. Georgia Southern's nationally accredited academic programs prepare diverse scholars for leadership and service as world citizens. A unit of the University System of Georgia, the university boasts more than 200 student organizations, outstanding Division I athletics, and state-of-the-art residence halls and campus facilities.

Founded 1906

Undergraduate enrollment 23,542 (fall 2021)

Graduate enrollment 3,549 (fall 2021)

Public

In-state tuition \$5,904/year (12 credit hours)

Out-of-state tuition \$16,958/year (12 credit hours)

Georgia freshmen on HOPE 72.1% (on HOPE or the Zell Miller Scholarship)

Average composite three-part sat score for entering freshmen n/a

Average evidence-based reading and math composite sat score 1093

Sat score breakdown 558, critical reading; 535, math; n/a, writing

Average act score for entering freshmen 21

act score breakdown 21, English; 21, math; 23, reading; 22, science; NA, writing

Popular majors bachelor's degrees: exercise science, biology, psychology, mechanical engineering, management; master's degrees: education, business, health professions, social sciences, engineering

*GEORGIA SOUTHWESTERN STATE UNIVERSITY

800 Georgia Southwestern State University Drive, Americus, 31709, 877-871-4594, gsw.edu

Georgia Southwestern State University has been providing quality education to heads of state and leaders for more than a century. Notable alumni include former president Jimmy Carter, former first lady Rosalynn Carter, and the late former U.S. Attorney General Griffin B. Bell. The university's commitment to quality and affordability is reflected in its national ranking as one of the most affordable small colleges in the U.S. by greatvaluecolleges.net (#41). Georgia Southwestern State University also is ranked as a "Top 5 Best Value" in Georgia by the National Council on Teacher Quality.

*GEORGIA STATE UNIVERSITY

33 Gilmer Street SE, Atlanta, 30303,
404-413-2000, gsu.edu

Georgia State University, an enterprising public research university in Atlanta, is a national leader in graduating students from diverse backgrounds. The university provides its world-class faculty and more than 50,000 students with unsurpassed connections to the opportunities available in one of the 21st century's great global cities. The 2022 edition of U.S. News & World Report's Best Colleges list ranked Georgia State as the No. 2 most innovative university in the country, as well as No. 2 for the best undergraduate teaching. The university is home to dozens of nationally ranked and recognized programs, with more than 250 majors, minors, and pathways available to students in a host of fields of study.

One University. Three Opportunities.

VSU offers you the
flexibility to tailor learning
to your interests and needs.
You'll find an educational
experience shaped to
fit your goals.

ON CAMPUS

FULLY ONLINE

**GRADUATE
DEGREE**



**VALDOSTA STATE
UNIVERSITY**

valdosta.edu



*The ONLINE COLLEGE for
CAREER ADVANCEMENT*

VALDOSTA STATE UNIVERSITY

valdosta.edu/onlinecollege



GRADUATE SCHOOL

VALDOSTA STATE UNIVERSITY

valdosta.edu/grad

COLLEGE GUIDE

***GORDON STATE COLLEGE**

419 College Drive, Barnesville, 30204,
678-359-5021/800-282-6504,
gordonstate.edu

Gordon State College offers a variety of bachelor's degrees and associate's degrees, a vibrant campus life for both commuters and residents, NJCAA athletics, small classes, and a caring campus community. The institution is home to 12 four-year degrees, 13 associate-level degree, and one nexus degree and currently serves more than 3,000 students.

Private

Tuition varies based on program

Georgia freshmen on HOPE n/a

Average composite three-part SAT score for entering freshmen n/a; SAT not required for admission

Average ACT score for entering freshmen n/a

Average class size for freshman courses 15

Popular majors business management, criminal justice, healthcare, information technology, legal studies, nursing

KENNESAW STATE UNIVERSITY

1000 Chastain Road, Kennesaw, 30144; 1100 South Marietta Parkway, Marietta, 30060,
470-578-6000, kennesaw.edu

A leader in innovative teaching and learning, Kennesaw State University offers undergraduate, graduate, and doctoral degrees to its nearly 43,000 students. With 11 colleges on two metro Atlanta campuses, Kennesaw State is a member of the University System of Georgia. The university's vibrant campus culture, diverse population, strong global ties, and entrepreneurial spirit draw students from throughout the country and the world. Kennesaw State is a Carnegie-designated doctoral research institution (R2), placing it among an elite group of only six percent of U.S. colleges and universities with an R1 or R2 status.

Founded 1963

Undergraduate enrollment 38,973 (fall 2021)

Graduate enrollment 4,010 (fall 2021)

Public

In-state tuition and fees \$3,449/semester

Out-of-state tuition and fees \$10,483/semester

Georgia freshmen on HOPE 74.5%

Average composite three-part SAT score for entering freshmen n/a

Average critical reading and math composite SAT score 1149

SAT score breakdown 582, evidence-based reading and writing; 569, math; KSU does not currently use writing scores in admissions

Average ACT composite score for entering freshmen 23

Average ACT score breakdown 22, English; 22, math

Average class size for freshman courses 37 for lower division courses (1000-2000)

Popular majors nursing, psychology, biology, mechanical engineering, marketing, management

LAGRANGE COLLEGE

601 Broad Street, LaGrange, 30240,
706-880-8000, lagrange.edu

Georgia's oldest private institution of higher learning, LaGrange College is consistently ranked among the South's top regional colleges by U.S. News & World Report. Affiliated with the United Methodist Church, LaGrange offers more than 50 areas of study with an emphasis on global engagement and service.

Founded 1831

Undergraduate enrollment 607

Graduate enrollment 70

Private

Tuition \$32,800/year

Georgia freshmen on HOPE 60%

Average composite three-part SAT score for entering freshmen During Covid-19, test scores not required

Average critical reading and math composite SAT score n/a

SAT score breakdown n/a

Average ACT score for entering freshmen

During Covid-19, test scores not required

ACT score breakdown n/a

Average class size for freshman courses 18

Popular majors nursing, business, exercise science, psychology, biology

LIFE UNIVERSITY

1269 Barclay Circle, Marietta, 30060,
770-426-2884/800-543-3202, life.edu

This health sciences institution is best known for its chiropractic program, which is the largest in the world. Life University is regionally accredited by the Southern Association of Colleges and Schools to award four-year undergraduate and graduate degrees in a variety of healthcare, science, business, and general studies fields. The university has programmatic accreditation through the Council on Chiropractic Education (CCE) and the Accreditation Council for Education in Nutrition and Dietetics (ACEND).

Founded 1974

Undergraduate enrollment 907

Master's degree enrollment 200

Doctor of chiropractic enrollment 1,666

Private

Tuition and fees \$287/credit hour (undergraduate); \$329/credit hour (master's); \$405/credit hour (chiropractic)

Georgia freshmen on HOPE 11%

Average composite three-part SAT score for entering freshmen 1000

Average critical reading and math composite SAT score 502

SAT score breakdown 506, critical reading; math, 498, writing 25

Average composite ACT score for entering freshmen 20

ACT score breakdown 18, English; 19, math; 8, writing



eCore ONLINE DUAL ENROLLMENT through UNIVERSITY SYSTEM OF GEORGIA INSTITUTIONS

eCore courses are an excellent choice for high school students who want to get a jump start on college without traveling to a physical campus for class. eCore classes are delivered entirely online through public University System of Georgia colleges and universities, meaning you don't have to sacrifice quality for flexibility and accessibility.

Learn more at ecore.usg.edu/DualEnrollment

1-855-93ECORE (9338)



**37 online
COURSES**
(Core Curriculum, Areas A – E)



**free DIGITAL
TEXTBOOKS**



**free ONLINE
TUTORING**



SUBSCRIBE TODAY!

Call 800-930-3019 or visit
atlantamagazine.com

Atlanta
MAGAZINE

EXPERIENCE THE ENCHANTED VALLEY!

Young Harris College is a private baccalaureate and master's degree-granting institution, located in the mountains of North Georgia and historically affiliated with The United Methodist Church.

FACTS

- Liberal arts education
- Professional programs
- Undergraduate, Dual Enrollment, and MAT programs
- 1,389 students
- 3+2 Dual Degree with UGA
- 15 NCAA Division II athletics teams



COLLEGE GUIDE

Average class size for freshman courses 15

Popular majors undergraduate: health and wellness, biology, exercise science, business administration, dietetics, nutrition, culinary nutrition, computer information management, biopsychology, psychology, health coaching, human ecology, interdisciplinary studies; master's programs: sport health science, clinical nutrition, positive psychology; Doctor of Chiropractic degree

MERCER UNIVERSITY

1501 Mercer University Drive, Macon, 31207;
3001 Mercer University Drive, Atlanta, 30341,
800-MERCER-U, mercer.edu

More than 9,000 students attend Mercer's 12 schools and colleges. The University has major campuses in Macon, Atlanta, Savannah, and Columbus and two regional academic centers in Metro Atlanta. Mercer is affiliated with five teaching hospitals: Memorial University Medical Center in Savannah; Medical Center, Atrium Health Navicent, and Piedmont Macon Medical Centers in Macon; and Piedmont Columbus Regional Hospital and St. Francis Hospital in Columbus. The University also has an educational partnership with Robins Air Force Base in Warner Robins. It operates an academic press and a performing arts center in Macon and an engineering research center in Warner Robins. Mercer is the only private university in Georgia to field an NCAA Division I athletic program.

Founded 1833

Total enrollment 9033 (fall 2021)

Undergraduate enrollment 5,010

Graduate enrollment 4,135 (headcount enrollment by students are duplicated counts; a student may have a valid matriculation at more than one level)

Private

Tuition Macon undergraduate academic year 2022-2023: \$39,708

Georgia freshmen on HOPE 94.9%

SAT composite score 1240-1370 (25th and 75th percentiles)

SAT score breakdown 595-700, math; 625-700, evidence-based reading and writing (25th and 75th percentiles)

Average composite ACT score for entering freshmen 28-32 (25th and 75th percentiles)

ACT score breakdown 26-34, English; 25-30, math (25th and 75th percentiles)

Average class size for freshman courses 16

Popular majors biology, engineering, public health, neuroscience, marketing, accounting, psychology, general business, nursing

professional leadership, public relations, secondary education, nursing, and technical and professional writing, as well as a doctorate in IT. Other graduate programs are under development. About 20 MGA degrees are offered entirely online. The university is home to Georgia's flagship aviation school (based on the Eastman Campus) and a four-year degree in flight. Student housing is available on the Macon, Cochran, and Eastman campuses. Ten women and men's athletics teams compete in the Southern States Athletic Conference of the National Association of Intercollegiate Athletics.

Founded 1884

Undergraduate enrollment 8,000

Graduate enrollment 419

Public

In-state tuition \$2,381/semester

Out-of-state tuition \$5,295/semester

Georgia freshmen on HOPE 37%

NOTE: MGA is among the University System of Georgia institutions no longer requiring SAT/ACT scores for admission.

Average composite three-part SAT score for entering freshmen n/a

Average critical reading and math composite SAT score n/a

SAT score breakdown n/a, reading and writing; n/a, math

Average composite ACT score for entering freshmen n/a

ACT score breakdown n/a, English; n/a, math

Average class size for freshman courses 24

Popular majors aviation, business, nursing, rehab science, information technology (including a fully online option), psychology, biology, media and communication

***MOREHOUSE COLLEGE**

830 Westview Drive, Atlanta, 30314,
404-681-2800, morehouse.edu

Morehouse College is the only historically Black college dedicated to educating men. Founded in 1867, Morehouse is a private, liberal arts institution and the nation's top producer of Black men who go on to receive doctorates and the top producer of Rhodes Scholars among HBCUs. As the epicenter for thought leadership on civil rights, Morehouse is committed to

helping the nation address the inequities caused by institutional racism. Prominent Morehouse alumni include Martin Luther King Jr., Nobel Peace Prize Laureate; former U.S. Surgeon General David Satcher; Shelton "Spike" Lee, award-winning American filmmaker; Maynard H. Jackson, the first African American mayor of Atlanta; and Senator Raphael Warnock. Morehouse currently has more than 18,000 alumni in 14 countries.

OGLETHORPE UNIVERSITY

4484 Peachtree Road, Atlanta, 30319,
404-261-1441, oglethorpe.edu

Oglethorpe is a historic Atlanta private liberal arts university where students come first. The campus is home to nearly 1,500 diverse and engaged students from more than 30 states and 30 countries. Oglethorpe helps students apply their classroom knowledge and skills in the real world through internships, study abroad, civic engagement, and undergraduate research opportunities. In recent years, Oglethorpe has expanded its academic programs and grown its campus, adding the Q. William Hammack, Jr. School of Business and the Cousins Center for Science and Innovation. Flagship 50 is Oglethorpe's signature merit tuition scholarship program, which matches all 50 states' public flagship in-state tuition for qualified students. Oglethorpe is home to the Conant Performing Arts Center and the Oglethorpe University Museum of Art.

Founded 1835

Undergraduate enrollment 1,498

Private

Tuition \$43,710/year (2022-2023)

Georgia freshmen on HOPE 69%

Average composite three-part SAT score for entering freshmen n/a

Average critical reading and math composite SAT score 1090-1280 (middle 50th percentiles)

SAT score breakdown 540-650, evidence-based reading and writing; 520-650, math (middle 50th percentiles)

Average ACT score for entering freshmen 25 (middle 50th percentile)

ACT score breakdown 19-30, English; 18-26, math

**MIDDLE GEORGIA STATE UNIVERSITY**

100 University Parkway, Macon, 31206,
478-471-2700/478-471-2725, mga.edu

Middle Georgia State University (MGA) serves about 8,000 students on campuses in Macon, Cochran, Dublin, Eastman, and Warner Robins. Students can choose from 65+ areas of study—including information technology, health sciences, media/communication, business, and aviation—that lead to bachelor's degrees. MGA also offers professionally oriented master's degrees, including in IT,

Average class size for freshman courses 18

Popular majors business administration, biology, psychology, communications, physics/engineering

***PAINE COLLEGE**

1235 15th Street, Augusta, 30901,
706-821-8200, paine.edu

A small, church-affiliated, and predominantly African American liberal arts institution, Paine College is steeped in the tenets of Methodism that provide the highest quality education. The goal of the institution is to emphasize academic excellence, ethical and spiritual values, and personal development to prepare students for positions of leadership and service. Paine College offers major programs in fields leading to two degrees: Bachelor of Arts and Bachelor of Science. Students may choose from a total of seven majors offered in two schools across five departments, including business administration, history, mass communications, biology, mathematics, psychology, and sociology.

PIEDMONT UNIVERSITY

1021 Central Avenue, Demorest, 30535; 1282 Prince Avenue, Athens, 30606,
706-778-3000/706-548-8505, piedmont.edu

Piedmont University is an independent, comprehensive, coeducational liberal arts college that offers bachelor's, master's, and doctoral degrees. With campuses in Demorest and Athens, the university enrolls approximately 1,950 students, representing 26 states and six countries, and maintains affiliations with the National Association of Congregational Christian Churches and the United Church of Christ.

Founded 1897

Undergraduate enrollment 1,224

Graduate enrollment 672

Private

Tuition \$14,485/semester (Demorest); \$10,690/semester (Athens)

Georgia freshmen on HOPE 75%

Average composite three-part SAT score for entering freshmen 1100

Average critical reading and math composite SAT score 1065

SAT score breakdown n/a; does not currently use writing score in admissions

Average ACT score for entering freshmen 22

ACT score breakdown n/a

Average class size for freshman courses 17

Popular majors art, athletic training, business, communication sciences and disorders, education (early, middle, secondary), exercise and sport science, fine arts, forensic science, mass communications, music, nursing, social sciences, theater

POINT UNIVERSITY

507 West 10th Street, West Point, 31833
(There are offsite locations in Peachtree City and Savannah), 706-385-1100/855-37-POINT, point.edu

Founded as Atlanta Christian College, Point University is a private, Christian, four-year



liberal arts institution. Students, faculty, and staff were recently awarded the President's Higher Education Community Service Award.

Founded 1937

Undergraduate enrollment 1,641 (fall 2021)

Private

Tuition \$10,350/semester

Georgia freshmen on HOPE NA

Average composite three-part SAT score for entering freshmen n/a

Average ACT score for entering freshmen n/a

Average class size for freshman courses 12

Popular majors exercise science, management and financial management, business administration, criminal justice, biology

REINHARDT UNIVERSITY

7300 Reinhardt Circle, Waleska, 30183,
770-720-5600, reinhardt.edu

Reinhardt is focused on meeting student needs one person at a time. This personalized education approach is best provided in small classes by talented professors who challenge with care. Students find Reinhardt's academic programs engaging, challenging, and relevant—an investment that yields positive returns to their personal and professional lives. Graduates who take full advantage of Reinhardt's opportunities enter their chosen profession with the richness of a broad, liberal arts education coupled with specific professional preparation through participation in engaging classroom experiences, co-curricular enrichment opportunities, challenging research projects, rewarding service initiatives, exciting internships, and life-transforming studies abroad. Reinhardt students can choose from over 40 programs of study for associate, bachelor's, and master's level degrees. Students learn beyond the classroom, working with community leaders and local business owners, performing on stage,

observing in the classroom, or working alongside faculty as they conduct research. Reinhardt University educates the whole person by developing the intellectual, social, personal, vocational, spiritual, and physical dimensions of its students. Reinhardt's 525-acre campus sits in the foothills of the North Georgia Mountains. Students can go straight from a great class to the great outdoors to enjoy camping, playing disc golf, and hiking the seven miles of trails on campus.

Founded 1883

Undergraduate enrollment 1,053

Graduate enrollment 83

Private

Tuition \$27,300/year (traditional undergraduate)

Georgia freshmen on HOPE 51.3%

Average composite three-part SAT score for entering freshmen 29

Average critical reading and math composite SAT score 1056

SAT score breakdown n/a

Average composite ACT score for entering freshmen 20

Average class size for freshman courses 14

Popular majors business administration, sports administration, criminal justice, nursing, music education, biology

***SAINT LEO UNIVERSITY**

325 W. Montgomery Cross Road, Suite A, Savannah, 31406, 912-999-1044, saintleo.edu/savannah-education-center

Though based in Saint Leo, Florida, Saint Leo University has a presence in Georgia with its Savannah Education Center, a facility that allows students to start an undergraduate program or finish a degree. Students can explore a variety of undergraduate and graduate degree program options in such fields of study as business administration,

COLLEGE GUIDE

criminal justice, psychology, healthcare administration, human resource management, marketing, or sports business. Saint Leo University, the oldest Catholic institution of higher learning in Florida, consistently ranks as one of the top universities in the South, according to U.S. News & World Report's America's Best Colleges list.

*SAVANNAH COLLEGE OF ART AND DESIGN

P.O. Box 2072, Savannah, 31402, 912-525-5100/800-869-7223, 1600 Peachtree Street, Atlanta, 30309, 404-253-2700/877-722-3285, scad.edu
The Savannah College of Art and Design (SCAD) is a private, nonprofit, accredited university offering more than 100 academic degree programs across its locations in Atlanta and Savannah, Georgia; Lacoste, France; and online via SCADnow. SCAD enrolls approximately 15,000 undergraduate and graduate students from more than 100 countries. The innovative SCAD curriculum engages professional-level technology and other advanced learning resources and affords students opportunities for internships, professional certifications, and real-world assignments with corporate partners through SCADpro, the university's renowned research lab and prototype generator. Career preparation is woven into every fiber of the university. SCAD provides students and alumni with ongoing career support through personal coaching, alumni programs, a professional presentation studio, and more.

SAVANNAH STATE UNIVERSITY

3219 College Street, Savannah, 31404, 912-358-4EDU, savannahstate.edu
Established in 1890, Savannah State University is the oldest public Historically Black College or University in Georgia and the first institution of higher learning in the city of Savannah. Students select majors from 30 undergraduate and five graduate programs in four colleges: business administration, education, liberal arts and social sciences, and sciences and technology.
Founded 1890
Undergraduate enrollment 3,245
Graduate enrollment 243
Public
In-state tuition \$4,378/semester
Out-of-state tuition \$10,160/semester
Georgia freshmen on HOPE 14.2%
Average composite three-part SAT score for entering freshmen 875
Average critical reading and math composite SAT score 875
SAT score breakdown 480, evidence-based reading; 440, math; does not currently use writing score in admissions
Average ACT score for entering freshmen 18
ACT score breakdown 17, English; 17, math; 17, reading
Average class size for freshman courses 18
Popular majors biology, business management, mass communications, criminal justice, interdisciplinary studies

*SHORTER UNIVERSITY

315 Shorter Avenue, Rome, 30165, 706-291-2121/800-868-6980, shorter.edu
Founded in 1873, Shorter University is a Christ-centered, four-year liberal arts institution. The university offers traditional bachelor's degrees in 40 areas of study, online courses and degree programs for working adults, and master's degree programs. Fields of study include everything from business, Christian studies, and math to computer information systems, psychology, and youth ministry. The school also boasts an array of international programs, with partner universities in locales like Kuala Lumpur, Malaysia; Tegucigalpa, Honduras; and Hamburg, Germany. Both U.S. News & World Report and the Princeton Review annually include Shorter University on their lists of best colleges in the Southeast.

SOUTH GEORGIA STATE COLLEGE

100 West College Park Drive, Douglas, 31533, 912-260-4200/800-342-6364, sgsc.edu
South Georgia State College is a residential state college of the University System of Georgia focused on a core of strong teaching and personalized academic advising. It has a long and distinguished tradition of serving the people of Georgia. Students pursue associate's degrees in over 20 programs of study, which transfer to other institutions or prepare them for careers in a variety of fields. SGSC offers eight bachelor's degree programs, including the Bachelor of Science degree in biological sciences, management, nursing, early childhood/special education (P-5), long-term healthcare management, mechanical engineering technology, public service leadership, and the bachelor of arts degree in professional, business, and technical writing
Founded 1906
Undergraduate enrollment 1,774
Public
In-state tuition \$95/credit hour
Out-of-state tuition \$359.67/credit hour
Georgia freshmen on HOPE 39%
Average composite three-part SAT score for entering freshmen n/a
Average ACT score for entering freshmen n/a
Average class size for freshman courses 23
Popular majors business, education, nursing

*SOUTH UNIVERSITY

709 Mall Boulevard, Savannah, 31406, 912-201-8000, southuniversity.edu
South University has a 120-year tradition of excellence in education and personalized student attention. While recognized for its competitive graduate-level programs in pharmacy, physician assistant, and nursing, the university also offers undergraduate programs in numerous disciplines, including business, information technology, and health and behavioral sciences. In addition to its flagship campus in Savannah, the university has other campuses across the U.S. South University also offers online degree programs that allow the flexibility in scheduling needed by adults balancing the demands of family and career.

*SPELMAN COLLEGE

350 Spelman Lane, Atlanta, 30314, 404-681-3643, spelman.edu
Founded in 1881, Spelman is a selective liberal arts college recognized as a global leader in the education of women of African descent. Outstanding alumnae include Children's Defense Fund founder Marian Wright Edelman, former Sam's Club CEO Rosalind Brewer, Broadway producer Alia Jones-Harvey, and former acting U.S. Surgeon General and Spelman's first alumna president Audrey Forbes Manley. The school offers strong academic programs in the arts, humanities, social sciences, mathematics, and the sciences.

*STRAYER UNIVERSITY

3101 Towercreek Parkway SE Suite 700, Atlanta, 30339 (There are eight total Georgia locations, including Augusta, Chamblee, Cobb County (address listed), Columbus, Lithonia, Morrow, Macon, and Savannah, 877-582-0284, strayer.edu
Strayer has provided higher education for working adults for 129 years. Strayer offers online undergraduate and graduate degree programs and provides an on-campus experience with over 60 campuses in 17 states and the District of Columbia. The school features an array of academic programs in everything from accounting and business administration to criminal justice and information technology. Students can pursue degrees at all levels, including bachelor's, master's, and associate.

THOMAS UNIVERSITY

1501 Millpond Road, Thomasville, 31792, 229-226-1621/844-862-6978, thomas.edu
This four-year university serves students from 40 states and 23 countries. It offers 25 undergraduate majors, 13 graduate programs, and a low student-faculty ratio of 10:1. All core classes and some degrees are available online.
Founded 1950
Undergraduate enrollment 783
Graduate enrollment 661
Private
Tuition \$13,500/year
Georgia freshmen on HOPE 22%
Average composite three-part SAT score for entering freshmen 886
Average ACT score for entering 18
Average class size for freshman courses 18
Popular majors business, criminal justice, medical laboratory science, psychology, education, biology, computer systems management, exercise and sport science

TOCCOA FALLS COLLEGE

107 Kincaid Drive, MSC 899, Toccoa Falls, 30598, 706-886-6831, tfc.edu
A Christian college located in the foothills of the Northeast Georgia Mountains, Toccoa Falls College currently offers 30 majors and 41 minors within four schools: Professional Studies, Arts and Sciences, Christian Ministries, and Nursing.
Founded 1907

Undergraduate enrollment 837**Private****Tuition** \$11,175/semester**Georgia freshmen on HOPE** 74% (percentage reflects HOPE or the Zell Miller Scholarship)**Average composite three-part SAT score for entering freshmen** n/a**Average critical reading and math composite SAT score** 1100**SAT score breakdown** 570, critical reading; 529, math; writing not calculated**Average ACT score for entering freshmen** 22**ACT score breakdown** n/a**Average class size for freshman courses** 24**Popular majors** biology, business, counseling/psychology, cross-cultural studies, music, outdoor leadership and education, pastoral ministries, sustainable community development, teacher education, nursing**TROY UNIVERSITY***Troy, AL 36082, 800-414-5756, troy.edu*

Established in 1887, Troy University now serves more than 15,500 students through four campuses in Alabama, support centers in seven other states, and a robust offering of online programs. The Troy campus offers the traditional college experiences, including on-campus residence halls, numerous dining options, a state-of-the-art fitness center, more than 150 student organizations, and Division I athletics. Troy has been recognized nationally as one of the best universities in the Southeast by the *Princeton Review* for 18 consecutive years and was selected by U.S. News & World Report as one of the South's best regional universities. Known for quality academics, Troy offers more than 200 degree

options, including 92 undergraduate and 119 graduate options. Troy's faculty and staff are committed to serving students and equipping graduates with the skills necessary to be leaders in their chosen fields. If you are ready to lead change and make your dreams real, Troy is the university for you, whether you study at our Troy campus; our campuses in Dothan, Montgomery, or Phenix City; a service center; or online.

Founded 1887**Undergraduate enrollment** approximately 11,786**Graduate enrollment** approximately 3,617**Public****Tuition** \$388/credit hour (undergraduate); \$475/credit hour (graduate)**Georgia freshmen on HOPE** n/a**Average composite three-part SAT score for entering freshmen** 1037.4**SAT score breakdown** 522.9, critical reading; 506.8, math**Average ACT score for entering freshmen** 22**Average class size for freshman courses** 10-15 (depends on campus/location)**Popular majors** biology, business, computer science, counseling/psychology, criminal justice, English, history, music, teacher education***TRUETT MCCONNELL UNIVERSITY***100 Alumni Drive, Cleveland, 30528,**706-865-2134, truet.edu*

Truett McConnell University (TMU), founded in 1946, is a private Christian liberal arts and sciences university, offering bachelor's and master's degree programs, operated under the auspices of the Baptist Convention of the

State of Georgia and controlled by a board of trustees elected by the Convention. The institution is dedicated to equipping students to fulfill the Great Commission by fostering a Christian worldview through a biblically centered education in a family-friendly environment. TMU offers 40 undergraduate and 10 graduate degree programs across nine schools, offering fields of study in biology, business administration, English, education, global studies, music, theology, and much more. It also is ranked as the third best online college in Georgia.

UNIVERSITY OF GEORGIA*Terrell Hall, Athens, 30602, 706-542-8776, uga.edu*

Chartered by the state of Georgia in 1785, the University of Georgia is the birthplace of public higher education in America—launching our nation's great tradition of world-class public education. A top value in public higher education, Georgia's flagship university thrives in a community that combines a culture-rich college town with a strong economic center. The University of Georgia offers 24 bachelor's degrees in more than 142 fields, 140 master's programs, 90 doctoral programs, and professional degrees in law, pharmacy, and veterinary medicine. U.S. News & World Report ranks UGA 16th among top public universities.

Founded 1785**Undergraduate enrollment** 29,765**Graduate enrollment** 9,382 (graduate and professional)**Public in-state tuition** \$12,080/year**Out-of-state tuition** \$31,120/year**Georgia freshmen on HOPE** n/a**Average composite three-part SAT score for entering freshmen** 1810-2060 (middle 50th percentiles) n/a**Average critical reading and math composite SAT score** n/a**SAT score breakdown** n/a**Average ACT score for entering freshmen** 32**ACT score breakdown** n/a**Average class size for freshman courses** 39**Popular majors** art, biochemistry and molecular biology, biological science, economics, English, finance, history, international affairs, marketing, political science, psychology, computer science, pharmacy, law, business administration**UNIVERSITY OF NORTH GEORGIA***82 College Circle, Dahlonega, 30597, 706-864-1400, ung.edu*

One of the state's largest universities, UNG serves almost 19,000 students across its five campuses in Blue Ridge, Cumming, Dahlonega, Gainesville, Oconee County, and online. In addition to housing the Military College of Georgia, UNG offers more than 100 programs of study, including certificates, associate's degrees, bachelor's degrees, master's degrees, and doctoral programs.

Founded 1873**Undergraduate enrollment** 17,533**Graduate enrollment** 805

COLLEGE GUIDE

Public

Public in-state tuition \$7,012/year (Dahlonega, bachelor's track); \$6,176 (Gainesville, bachelor's track); \$3,784/year (associate's degree track)

Out-of-state tuition \$21,170/year (Dahlonega, bachelor's track); \$20,334 (Gainesville, bachelor's track); \$12,416/year (associate's degree track)

Georgia freshmen on HOPE 72%

Average composite three-part SAT score for entering freshmen n/a

Average critical reading and math composite SAT score 1100

SAT score breakdown 563, critical reading; 541, math; the university does not currently use writing scores in admissions

Average ACT score for entering freshmen 22

ACT score breakdown 22, English; 21, math; 24, reading; 23, science

Average class size for freshman courses 21

Popular majors biology, nursing, business management, psychology, business administration

***UNIVERSITY OF WEST GEORGIA**

1601 Maple Street, Carrollton, 30118, 678-839-5000, westga.edu

More than 13,400 students are enrolled at the University of West Georgia. The school offers 92 programs of study and more than 170 student organizations; undergraduate students can complete their first two years of core curriculum in an online environment through eCore. U.S. News & World Report ranked four of UWG's online programs as the nation's best in 2021, also naming it the No. 2 institution in the state for social mobility.

VALDOSTA STATE UNIVERSITY

1500 North Patterson Street, Valdosta, 31698, 229-333-5791, valdosta.edu

Valdosta State University is a public comprehensive university that knows there is no one-size-fits-all approach to personal and professional growth. That's why VSU created a unique model of education that's centered around individualized mentorship and support. Each student comes to VSU with their own ideas and inspiration, and once they are here, they develop the communication skills, connections, and critical thinking to turn that inspiration into a success story that's all their own. The result is a powerful and positive community of Blazers who find genuine happiness and fulfillment in their personal and professional lives and use it to empower the people and places closest to them. The school offers more than 180 programs at nine different levels: associate's, bachelor's, master's, specialist, and doctoral degrees, as well as minor, certificate, certification, and endorsement. Programs are available online, on campus, and via a hybrid format across six colleges: Arts, Business Administration, Education and Human Services, Humanities and Social Sciences, Science and Mathematics, and Nursing and Health Sciences. A new Online College for Career Advancement opened during the 2021-2022 academic year.

Founded 1906

Undergraduate enrollment 8,776

Graduate enrollment 2,797

In-state tuition \$2,732 (undergraduate; 15 hours per semester)

Out-of-state tuition \$9,641 (undergraduate; 15 hours per semester)

Georgia freshmen on HOPE 80%

SAT minimum entrance scores 480,

evidence-based reading and writing; 440, math

ACT minimum entrance scores 17, English; 17, math

Average class size for freshman courses 22

Average student to teacher ratio 20:1

Popular majors biology, criminal justice, elementary education, health science, library and information science, management, nursing, organizational leadership, psychology, public administration

***WESLEYAN COLLEGE**

4760 Forsyth Road, Macon, 31210, 800-447-6610, wesleyancollege.edu

Wesleyan was the first college in the world chartered to grant degrees to women. Seminar-style classes and a low student-faculty ratio allow for individual attention. The entire 200-acre campus is listed on the National Register of Historic Places. Wesleyan College offers the following degrees: Bachelor of Arts with the choice of 21 different majors; Bachelor of Fine Arts; and Bachelor of Science in Nursing. Women can choose to earn their bachelor's degree 100% online in business administration, accounting, and applied psychology. Master's degree programs in business administration, healthcare administration, nonprofit management, industrial-organizational psychology, music, and elementary education admit both men and women.

YOUNG HARRIS COLLEGE

P.O. Box 116, Young Harris, 30582, 706-379-5123/800-241-3754, yhc.edu

Young Harris College is a private baccalaureate and master's degree-granting institution located in the beautiful mountains of North Georgia. Founded in 1886 and historically affiliated with the United Methodist Church, Young Harris College educates, inspires, and empowers students through an education that purposefully integrates the liberal arts and professional studies. The College has four academic divisions: Fine Arts; Humanities; Mathematics, Science, and Technology; and Professional Studies. Approximately 1,400 students are enrolled in its residential, Early College, and MAT programs. The College is an active member of the NCAA Division II and remains a fierce competitor in the prestigious Peach Belt Conference.

Founded 1886

Undergraduate enrollment 1,389 traditional and dual-enrollment students

Graduate enrollment 16

Private

Tuition \$28,912

Average cost before aid \$42,979/year (tier 2)

Average cost after aid \$22,979/year (after institution aid)

**nearly 100% of YHC students receive some form of financial aid*

Georgia freshmen on HOPE 71%

Average composite three-part SAT score for entering freshmen n/a

Average critical reading and math composite SAT score n/a

SAT score breakdown n/a

Average ACT score for entering freshmen n/a

ACT score breakdown n/a

Average class size for freshman courses 15

Popular majors biology, business administration, communication studies, education, history, management

